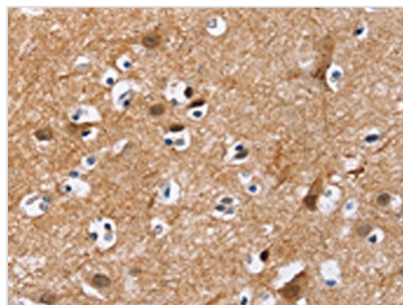




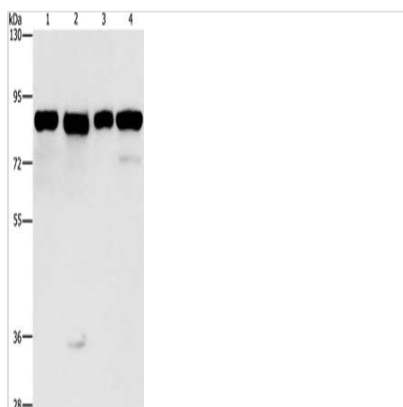
MAD1L1 Antibody

Product Code	CSB-PA133797
Storage	Upon receipt, store at -20°C or -80°C. Avoid repeated freeze.
Uniprot No.	Q9Y6D9
Immunogen	Fusion protein of Human MAD1L1
Raised In	Rabbit
Species Reactivity	Human,Mouse
Tested Applications	ELISA,WB,IHC;ELISA:1:2000-1:5000,WB:1:500-1:2000,IHC:1:25-1:100
Form	Liquid
Conjugate	Non-conjugated
Storage Buffer	-20°C, pH7.4 PBS, 0.05% NaN ₃ , 40% Glycerol
Purification Method	Antigen affinity purification
Isotype	IgG
Alias	MAD1 mitotic arrest deficient-like 1 (yeast)
Immunogen Species	Homo sapiens (Human)
Target Names	MAD1L1

Image



The image on the left is immunohistochemistry of paraffin-embedded Human brain tissue using CSB-PA133797(MAD1L1 Antibody) at dilution 1/25, on the right is treated with fusion protein. (Original magnification: x200)



Gel: 8%SDS-PAGE, Lysate: 40 µg, Lane 1-4: HeLa cells, 231 cells, hepG2 cells, Raji cells, Primary antibody: CSB-PA133797(MAD1L1 Antibody) at dilution 1/500, Secondary antibody: Goat anti rabbit IgG at 1/8000 dilution, Exposure time: 1 second

Usage

For Research Use Only. Not for use in diagnostic or therapeutic procedures.