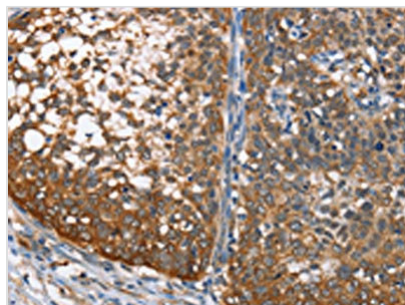




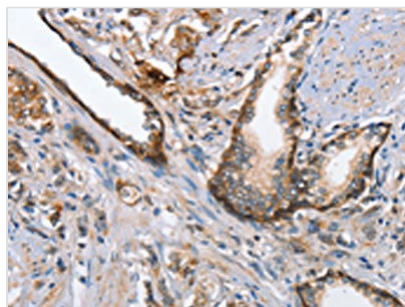
MAD2L1BP Antibody

Product Code	CSB-PA246770
Storage	Upon receipt, store at -20°C or -80°C. Avoid repeated freeze.
Uniprot No.	Q15013
Immunogen	Fusion protein of Human MAD2L1BP
Raised In	Rabbit
Species Reactivity	Human
Tested Applications	ELISA, WB, IHC; ELISA: 1:2000-1:5000, WB: 1:500-1:2000, IHC: 1:50-1:200
Form	Liquid
Conjugate	Non-conjugated
Storage Buffer	-20°C, pH7.4 PBS, 0.05% NaN ₃ , 40% Glycerol
Purification Method	Antigen affinity purification
Isotype	IgG
Alias	MAD2L1 binding protein
Immunogen Species	Homo sapiens (Human)
Target Names	MAD2L1BP

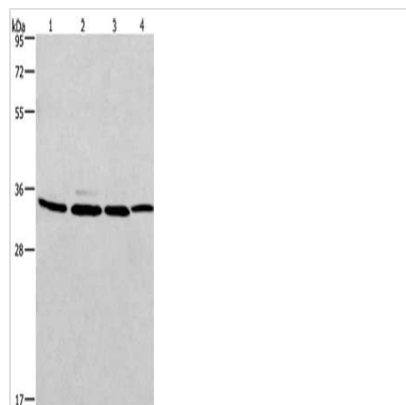
Image



The image on the left is immunohistochemistry of paraffin-embedded Human cervical cancer tissue using CSB-PA246770(MAD2L1BP Antibody) at dilution 1/65, on the right is treated with fusion protein. (Original magnification: x200)



The image on the left is immunohistochemistry of paraffin-embedded Human prostate cancer tissue using CSB-PA246770(MAD2L1BP Antibody) at dilution 1/65, on the right is treated with fusion protein. (Original magnification: x200)



Gel: 10%SDS-PAGE, Lysate: 40 μ g, Lane 1-4:
A549 cells, 231 cells, PC3 cells, hela cells,
Primary antibody: CSB-PA246770(MAD2L1BP
Antibody) at dilution 1/675, Secondary antibody:
Goat anti rabbit IgG at 1/8000 dilution, Exposure
time: 20 seconds

Usage

For Research Use Only. Not for use in diagnostic or therapeutic procedures.