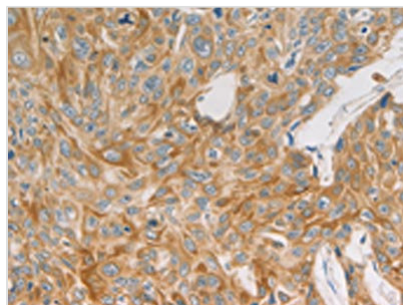




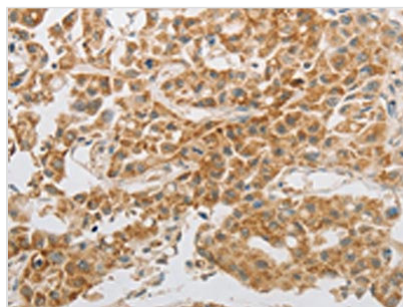
MAP2K6 Antibody

Product Code	CSB-PA895516
Storage	Upon receipt, store at -20°C or -80°C. Avoid repeated freeze.
Uniprot No.	P52564
Immunogen	Fusion protein of Human MAP2K6
Raised In	Rabbit
Species Reactivity	Human,Mouse
Tested Applications	ELISA,IHC;ELISA:1:2000-1:5000,IHC:1:25-1:100
Form	Liquid
Conjugate	Non-conjugated
Storage Buffer	-20°C, pH7.4 PBS, 0.05% NaN ₃ , 40% Glycerol
Purification Method	Antigen affinity purification
Isotype	IgG
Alias	mitogen-activated protein kinase kinase 6
Immunogen Species	Homo sapiens (Human)
Target Names	MAP2K6

Image



The image on the left is immunohistochemistry of paraffin-embedded Human lung cancer tissue using CSB-PA895516(MAP2K6 Antibody) at dilution 1/20, on the right is treated with fusion protein. (Original magnification: x200)



The image on the left is immunohistochemistry of paraffin-embedded Human esophagus cancer tissue using CSB-PA895516(MAP2K6 Antibody) at dilution 1/20, on the right is treated with fusion protein. (Original magnification: x200)