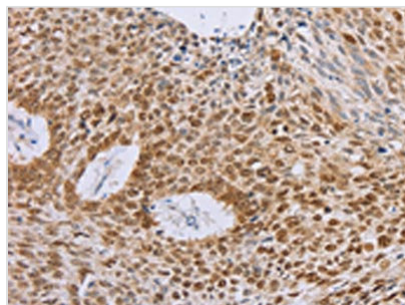




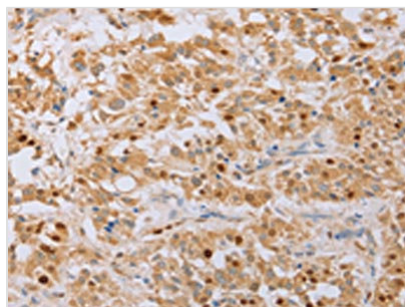
# MCM5 Antibody

<b>Product Code</b>	CSB-PA178630
<b>Storage</b>	Upon receipt, store at -20°C or -80°C. Avoid repeated freeze.
<b>Uniprot No.</b>	P33992
<b>Immunogen</b>	Fusion protein of Human MCM5
<b>Raised In</b>	Rabbit
<b>Species Reactivity</b>	Human, Mouse
<b>Tested Applications</b>	ELISA, WB, IHC; ELISA: 1:1000-1:2000, WB: 1:200-1:1000, IHC: 1:50-1:200
<b>Form</b>	Liquid
<b>Conjugate</b>	Non-conjugated
<b>Storage Buffer</b>	-20°C, pH7.4 PBS, 0.05% NaN <sub>3</sub> , 40% Glycerol
<b>Purification Method</b>	Antigen affinity purification
<b>Isotype</b>	IgG
<b>Alias</b>	minichromosome maintenance complex component 5
<b>Immunogen Species</b>	Homo sapiens (Human)
<b>Target Names</b>	MCM5

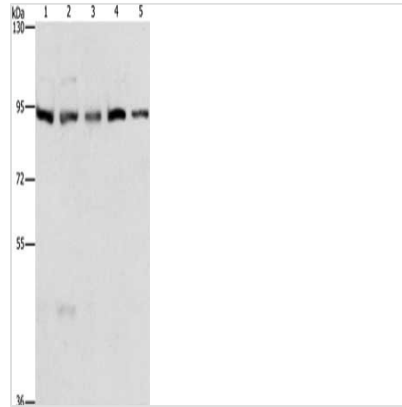
## Image



The image on the left is immunohistochemistry of paraffin-embedded Human lung cancer tissue using CSB-PA178630(MCM5 Antibody) at dilution 1/40, on the right is treated with fusion protein. (Original magnification: x200)



The image on the left is immunohistochemistry of paraffin-embedded Human thyroid cancer tissue using CSB-PA178630(MCM5 Antibody) at dilution 1/40, on the right is treated with fusion protein. (Original magnification: x200)



Gel: 6%SDS-PAGE, Lysate: 40  $\mu$ g, Lane 1-5:  
HepG2 cells, K562 cells, Jurkat cells, 231 cells,  
hela cells, Primary antibody: CSB-  
PA178630(MCM5 Antibody) at dilution 1/300,  
Secondary antibody: Goat anti rabbit IgG at  
1/8000 dilution, Exposure time: 20 seconds