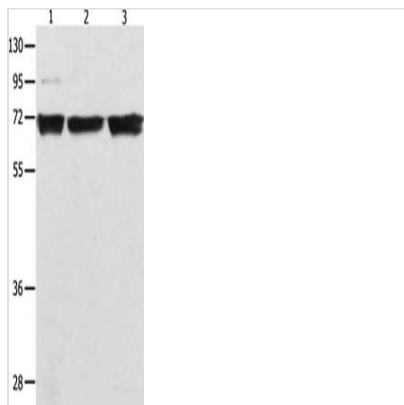




RELA Antibody

| | |
|----------------------------|---|
| Product Code | CSB-PA037612 |
| Storage | Upon receipt, store at -20°C or -80°C. Avoid repeated freeze. |
| Uniprot No. | Q04206 |
| Immunogen | Fusion protein of Human RELA |
| Raised In | Rabbit |
| Species Reactivity | Human,Mouse |
| Tested Applications | ELISA,WB;ELISA:1:2000-1:5000,WB:1:500-1:2000 |
| Form | Liquid |
| Conjugate | Non-conjugated |
| Storage Buffer | -20°C, pH7.4 PBS, 0.05% NaN ₃ , 40% Glycerol |
| Purification Method | Antigen affinity purification |
| Isotype | IgG |
| Alias | v-rel reticuloendotheliosis viral oncogene homolog A (avian) |
| Immunogen Species | Homo sapiens (Human) |
| Target Names | RELA |

Image



Gel: 10%SDS-PAGE, Lysate: 40 µg, Lane 1-3: 293T cells, K562 cells, Jurkat cells, Primary antibody: CSB-PA037612(RELA Antibody) at dilution 1/500, Secondary antibody: Goat anti rabbit IgG at 1/8000 dilution, Exposure time: 5 seconds

Usage

For Research Use Only. Not for use in diagnostic or therapeutic procedures.