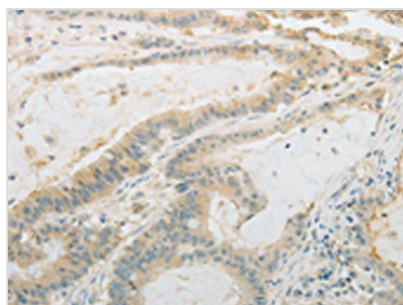




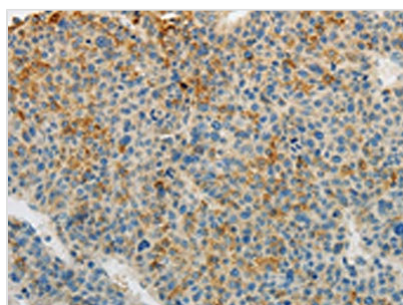
PLAU Antibody

| | |
|----------------------------|---|
| Product Code | CSB-PA960570 |
| Storage | Upon receipt, store at -20°C or -80°C. Avoid repeated freeze. |
| Uniprot No. | P00749 |
| Immunogen | Fusion protein of Human PLAU |
| Raised In | Rabbit |
| Species Reactivity | Human |
| Tested Applications | ELISA,IHC;ELISA:1:1000-1:2000,IHC:1:10-1:50 |
| Form | Liquid |
| Conjugate | Non-conjugated |
| Storage Buffer | -20°C, pH7.4 PBS, 0.05% NaN ₃ , 40% Glycerol |
| Purification Method | Antigen affinity purification |
| Isotype | IgG |
| Immunogen Species | Homo sapiens (Human) |
| Target Names | PLAU |

Image



The image on the left is immunohistochemistry of paraffin-embedded Human colon cancer tissue using CSB-PA960570(PLAU Antibody) at dilution 1/10, on the right is treated with fusion protein. (Original magnification: ×200)



The image on the left is immunohistochemistry of paraffin-embedded Human liver cancer tissue using CSB-PA960570(PLAU Antibody) at dilution 1/10, on the right is treated with fusion protein. (Original magnification: ×200)

Usage

For Research Use Only. Not for use in diagnostic or therapeutic procedures.