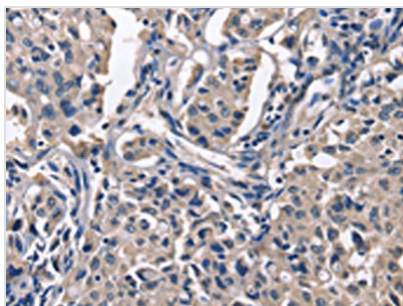




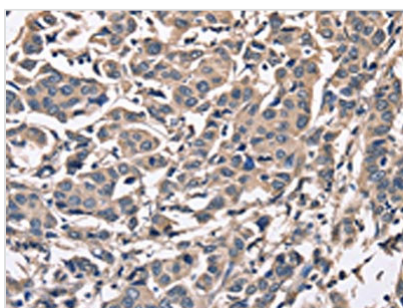
PEBP1 Antibody

Product Code	CSB-PA955522
Storage	Upon receipt, store at -20°C or -80°C. Avoid repeated freeze.
Uniprot No.	P30086
Immunogen	Fusion protein of Human PEBP1
Raised In	Rabbit
Species Reactivity	Human,Mouse,Rat
Tested Applications	ELISA,WB,IHC;ELISA:1:1000-1:5000,WB:1:500-1:2000,IHC:1:50-1:200
Form	Liquid
Conjugate	Non-conjugated
Storage Buffer	-20°C, pH7.4 PBS, 0.05% NaN ₃ , 40% Glycerol
Purification Method	Antigen affinity purification
Isotype	IgG
Immunogen Species	Homo sapiens (Human)
Target Names	PEBP1

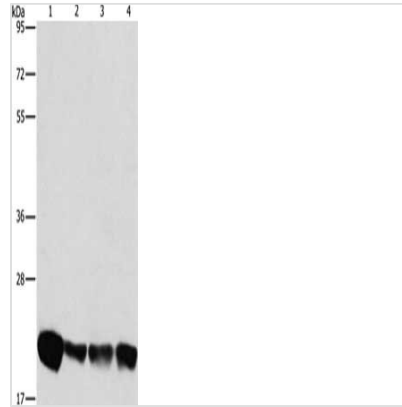
Image



The image on the left is immunohistochemistry of paraffin-embedded Human lung cancer tissue using CSB-PA955522(PEBP1 Antibody) at dilution 1/50, on the right is treated with fusion protein. (Original magnification: x200)



The image on the left is immunohistochemistry of paraffin-embedded Human breast cancer tissue using CSB-PA955522(PEBP1 Antibody) at dilution 1/50, on the right is treated with fusion protein. (Original magnification: x200)



Gel: 8%SDS-PAGE, Lysate: 40 μ g, Lane 1-4:
A549 cells, K562 cells, hela cells, hepG2 cells,
Primary antibody: CSB-PA955522(PEBP1
Antibody) at dilution 1/475, Secondary antibody:
Goat anti rabbit IgG at 1/8000 dilution, Exposure
time: 40 seconds

Usage

For Research Use Only. Not for use in diagnostic or therapeutic procedures.