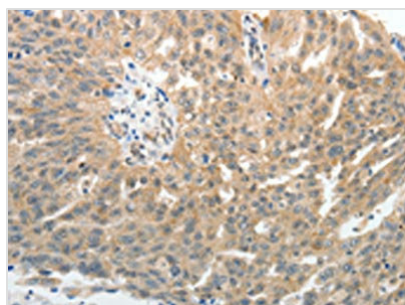




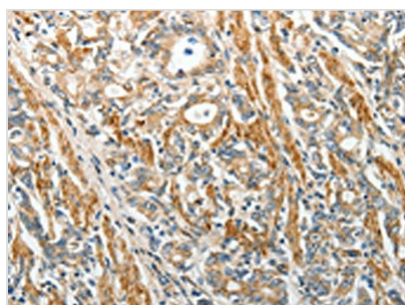
SELE Antibody

Product Code	CSB-PA056380
Storage	Upon receipt, store at -20°C or -80°C. Avoid repeated freeze.
Uniprot No.	P16581
Immunogen	Fusion protein of Human SELE
Raised In	Rabbit
Species Reactivity	Human
Tested Applications	ELISA,IHC;ELISA:1:2000-1:5000,IHC:1:50-1:200
Form	Liquid
Conjugate	Non-conjugated
Storage Buffer	-20°C, pH7.4 PBS, 0.05% NaN ₃ , 40% Glycerol
Purification Method	Antigen affinity purification
Isotype	IgG
Immunogen Species	Homo sapiens (Human)
Target Names	SELE

Image



The image on the left is immunohistochemistry of paraffin-embedded Human ovarian cancer tissue using CSB-PA056380(SELE Antibody) at dilution 1/40, on the right is treated with fusion protein. (Original magnification: ×200)



The image on the left is immunohistochemistry of paraffin-embedded Human gastric cancer tissue using CSB-PA056380(SELE Antibody) at dilution 1/40, on the right is treated with fusion protein. (Original magnification: ×200)

Usage

For Research Use Only. Not for use in diagnostic or therapeutic procedures.