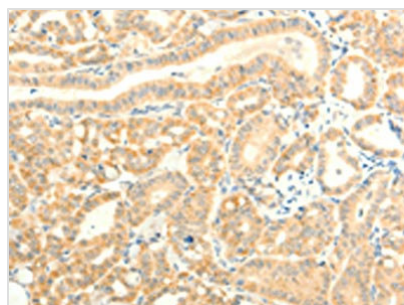




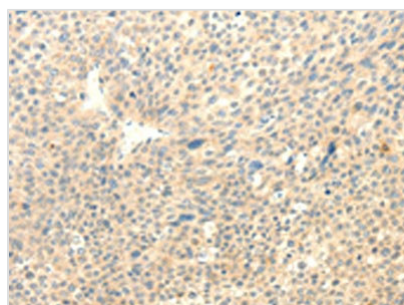
# TRAF6 Antibody

|                            |  |
|----------------------------|--|
| <b>Product Code</b>        | CSB-PA097438   |
| <b>Storage</b>             | Upon receipt, store at -20°C or -80°C. Avoid repeated freeze.  |
| <b>Uniprot No.</b>         | Q9Y4K3   |
| <b>Immunogen</b>           | Fusion protein of Human TRAF6                                  |
| <b>Raised In</b>           | Rabbit   |
| <b>Species Reactivity</b>  | Human,Mouse,Rat  |
| <b>Tested Applications</b> | ELISA,WB,IHC;ELISA:1:1000-1:2000,WB:1:200-1:1000,IHC:1:15-1:50 |
| <b>Form</b>                | Liquid   |
| <b>Conjugate</b>           | Non-conjugated   |
| <b>Storage Buffer</b>      | -20°C, pH7.4 PBS, 0.05% NaN <sub>3</sub> , 40% Glycerol        |
| <b>Purification Method</b> | Antigen affinity purification                                  |
| <b>Isotype</b>             | IgG  |
| <b>Immunogen Species</b>   | Homo sapiens (Human)   |
| <b>Target Names</b>        | TRAF6  |

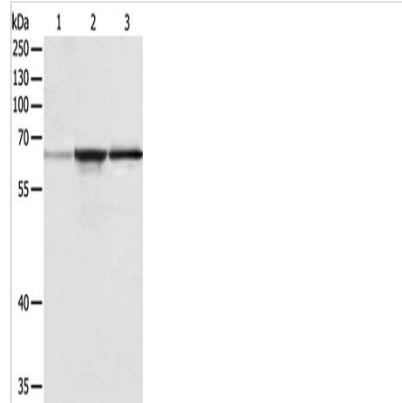
## Image



The image on the left is immunohistochemistry of paraffin-embedded Human thyroid cancer tissue using CSB-PA097438(TRAF6 Antibody) at dilution 1/15, on the right is treated with fusion protein. (Original magnification: x200)



The image on the left is immunohistochemistry of paraffin-embedded Human liver cancer tissue using CSB-PA097438(TRAF6 Antibody) at dilution 1/15, on the right is treated with fusion protein. (Original magnification: x200)



Gel: 10%SDS-PAGE, Lysate: 40  $\mu$ g, Lane 1-3:  
A431 cells, human liver cancer tissue, hela cells,  
Primary antibody: CSB-PA097438(TRAF6  
Antibody) at dilution 1/250, Secondary antibody:  
Goat anti rabbit IgG at 1/8000 dilution, Exposure  
time: 2 minutes

## Usage

For Research Use Only. Not for use in diagnostic or therapeutic procedures.