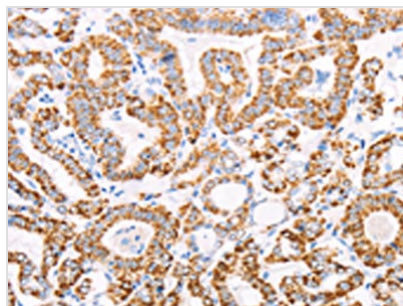




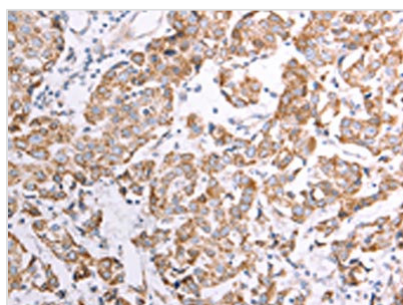
ATPIF1 Antibody

| | |
|----------------------------|---|
| Product Code | CSB-PA569426 |
| Storage | Upon receipt, store at -20°C or -80°C. Avoid repeated freeze. |
| Uniprot No. | Q9UII2 |
| Immunogen | Fusion protein of Human ATPIF1 |
| Raised In | Rabbit |
| Species Reactivity | Human |
| Tested Applications | ELISA,WB,IHC;ELISA:1:2000-1:10000,WB:1:1000-1:5000,IHC:1:50-1:200 |
| Form | Liquid |
| Conjugate | Non-conjugated |
| Storage Buffer | -20°C, pH7.4 PBS, 0.05% NaN ₃ , 40% Glycerol |
| Purification Method | Antigen affinity purification |
| Isotype | IgG |
| Immunogen Species | Homo sapiens (Human) |
| Target Names | ATPIF1 |

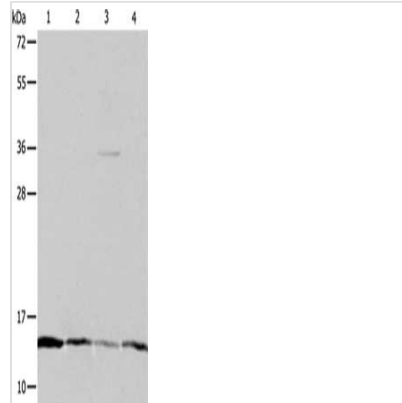
Image



The image on the left is immunohistochemistry of paraffin-embedded Human thyroid cancer tissue using CSB-PA569426(ATPIF1 Antibody) at dilution 1/50, on the right is treated with fusion protein. (Original magnification: x200)



The image on the left is immunohistochemistry of paraffin-embedded Human breast cancer tissue using CSB-PA569426(ATPIF1 Antibody) at dilution 1/50, on the right is treated with fusion protein. (Original magnification: x200)



Gel: 10+12+15%SDS-PAGE, Lysate: 40 μ g,
Lane 1-4: Hela cells, Jurkat cells, MCF7 cells,
A431 cells, Primary antibody: CSB-
PA569426(ATPIF1 Antibody) at dilution 1/1200,
Secondary antibody: Goat anti rabbit IgG at
1/8000 dilution, Exposure time: 2 minutes

Usage

For Research Use Only. Not for use in diagnostic or therapeutic procedures.