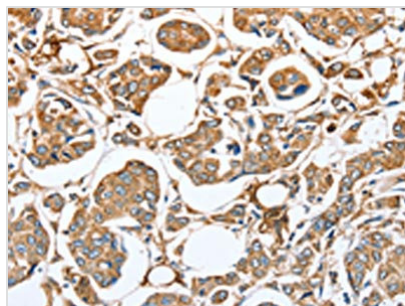




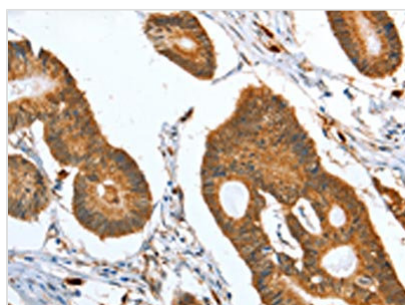
# CAPG Antibody

|                            |   |
|----------------------------|---|
| <b>Product Code</b>        | CSB-PA737797  |
| <b>Storage</b>             | Upon receipt, store at -20°C or -80°C. Avoid repeated freeze.   |
| <b>Uniprot No.</b>         | P40121  |
| <b>Immunogen</b>           | Fusion protein of Human CAPG                                    |
| <b>Raised In</b>           | Rabbit  |
| <b>Species Reactivity</b>  | Human,Mouse,Rat   |
| <b>Tested Applications</b> | ELISA,WB,IHC;ELISA:1:2000-1:5000,WB:1:500-1:2000,IHC:1:50-1:200 |
| <b>Form</b>                | Liquid  |
| <b>Conjugate</b>           | Non-conjugated  |
| <b>Storage Buffer</b>      | -20°C, pH7.4 PBS, 0.05% NaN <sub>3</sub> , 40% Glycerol         |
| <b>Purification Method</b> | Antigen affinity purification                                   |
| <b>Isotype</b>             | IgG   |
| <b>Immunogen Species</b>   | Homo sapiens (Human)  |
| <b>Target Names</b>        | CAPG  |

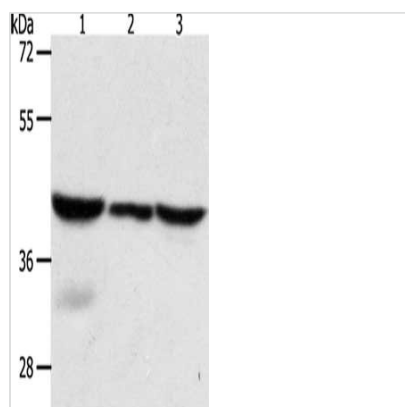
## Image



The image on the left is immunohistochemistry of paraffin-embedded Human breast cancer tissue using CSB-PA737797(CAPG Antibody) at dilution 1/35, on the right is treated with fusion protein. (Original magnification: x200)



The image on the left is immunohistochemistry of paraffin-embedded Human colon cancer tissue using CSB-PA737797(CAPG Antibody) at dilution 1/35, on the right is treated with fusion protein. (Original magnification: x200)



Gel: 10%SDS-PAGE, Lysate: 40  $\mu$ g, Lane 1-3:  
 Mouse lung tissue, human fetal lung tissue, hela  
 cells, Primary antibody: CSB-PA737797(CAPG  
 Antibody) at dilution 1/700, Secondary antibody:  
 Goat anti rabbit IgG at 1/8000 dilution, Exposure  
 time: 5 seconds