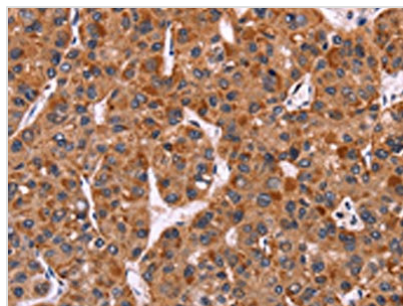




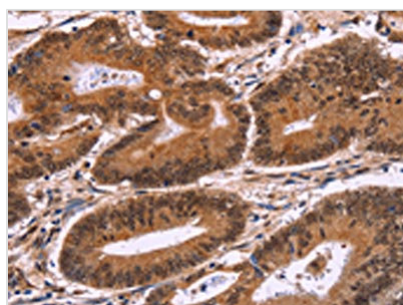
CARD11 Antibody

Product Code	CSB-PA567327
Storage	Upon receipt, store at -20°C or -80°C. Avoid repeated freeze.
Uniprot No.	Q9BXL7
Immunogen	Fusion protein of Human CARD11
Raised In	Rabbit
Species Reactivity	Human, Mouse
Tested Applications	ELISA, IHC; ELISA: 1:2000-1:5000, IHC: 1:50-1:200
Form	Liquid
Conjugate	Non-conjugated
Storage Buffer	-20°C, pH7.4 PBS, 0.05% NaN ₃ , 40% Glycerol
Purification Method	Antigen affinity purification
Isotype	IgG
Immunogen Species	Homo sapiens (Human)
Target Names	CARD11

Image



The image on the left is immunohistochemistry of paraffin-embedded Human liver cancer tissue using CSB-PA567327(CARD11 Antibody) at dilution 1/40, on the right is treated with fusion protein. (Original magnification: x200)



The image on the left is immunohistochemistry of paraffin-embedded Human colon cancer tissue using CSB-PA567327(CARD11 Antibody) at dilution 1/40, on the right is treated with fusion protein. (Original magnification: x200)

Usage

For Research Use Only. Not for use in diagnostic or therapeutic procedures.