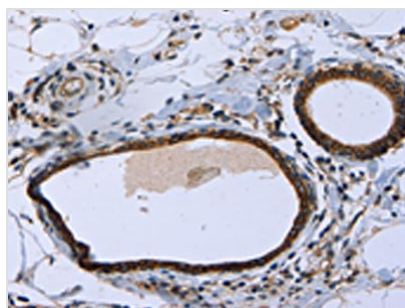




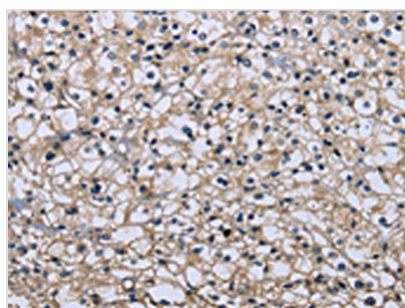
MAPRE3 Antibody

Product Code	CSB-PA059696
Storage	Upon receipt, store at -20°C or -80°C. Avoid repeated freeze.
Uniprot No.	Q9UPY8
Immunogen	Fusion protein of Human MAPRE3
Raised In	Rabbit
Species Reactivity	Human,Mouse,Rat
Tested Applications	ELISA,WB,IHC;ELISA:1:2000-1:5000,WB:1:500-1:2000,IHC:1:25-1:100
Form	Liquid
Conjugate	Non-conjugated
Storage Buffer	-20°C, pH7.4 PBS, 0.05% NaN ₃ , 40% Glycerol
Purification Method	Antigen affinity purification
Isotype	IgG
Immunogen Species	Homo sapiens (Human)
Target Names	MAPRE3

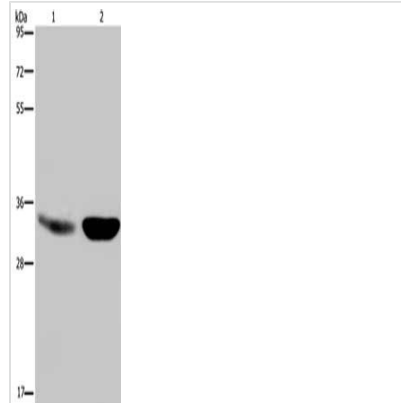
Image



The image on the left is immunohistochemistry of paraffin-embedded Human breast cancer tissue using CSB-PA059696(MAPRE3 Antibody) at dilution 1/20, on the right is treated with fusion protein. (Original magnification: x200)



The image on the left is immunohistochemistry of paraffin-embedded Human prostate cancer tissue using CSB-PA059696(MAPRE3 Antibody) at dilution 1/20, on the right is treated with fusion protein. (Original magnification: x200)



Gel: 8%SDS-PAGE, Lysate: 40 μ g, Lane 1-2:
Human fetal brain tissue, mouse brain tissue,
Primary antibody: CSB-PA059696(MAPRE3
Antibody) at dilution 1/500, Secondary antibody:
Goat anti rabbit IgG at 1/8000 dilution, Exposure
time: 5 seconds

Usage

For Research Use Only. Not for use in diagnostic or therapeutic procedures.