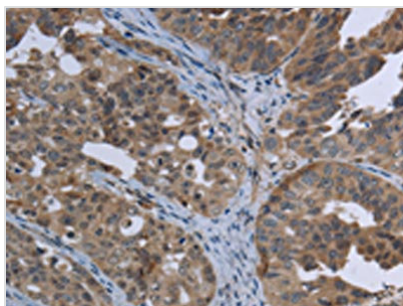




EPHA10 Antibody

Product Code	CSB-PA915371
Storage	Upon receipt, store at -20°C or -80°C. Avoid repeated freeze.
Uniprot No.	Q5JZY3
Immunogen	Fusion protein of Human EPHA10
Raised In	Rabbit
Species Reactivity	Human, Mouse
Tested Applications	ELISA, IHC; ELISA: 1:1000-1:2000, IHC: 1:25-1:100
Form	Liquid
Conjugate	Non-conjugated
Storage Buffer	-20°C, pH7.4 PBS, 0.05% NaN ₃ , 40% Glycerol
Purification Method	Antigen affinity purification
Isotype	IgG
Immunogen Species	Homo sapiens (Human)
Target Names	EPHA10

Image



The image on the left is immunohistochemistry of paraffin-embedded Human ovarian cancer tissue using CSB-PA915371 (EPHA10 Antibody) at dilution 1/20, on the right is treated with fusion protein. (Original magnification: ×200)

Usage For Research Use Only. Not for use in diagnostic or therapeutic procedures.