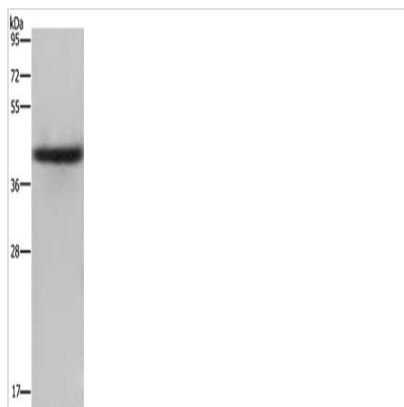




# EPSTI1 Antibody

|                            |                                                               |
|----------------------------|---------------------------------------------------------------|
| <b>Product Code</b>        | CSB-PA075804                                                  |
| <b>Storage</b>             | Upon receipt, store at -20°C or -80°C. Avoid repeated freeze. |
| <b>Uniprot No.</b>         | Q96J88                                                        |
| <b>Immunogen</b>           | Fusion protein of Human EPSTI1                                |
| <b>Raised In</b>           | Rabbit                                                        |
| <b>Species Reactivity</b>  | Human                                                         |
| <b>Tested Applications</b> | ELISA,WB;ELISA:1:2000-1:10000,WB:1:1000-1:5000                |
| <b>Form</b>                | Liquid                                                        |
| <b>Conjugate</b>           | Non-conjugated                                                |
| <b>Storage Buffer</b>      | -20°C, pH7.4 PBS, 0.05% NaN <sub>3</sub> , 40% Glycerol       |
| <b>Purification Method</b> | Antigen affinity purification                                 |
| <b>Isotype</b>             | IgG                                                           |
| <b>Immunogen Species</b>   | Homo sapiens (Human)                                          |
| <b>Target Names</b>        | EPSTI1                                                        |

## Image



Gel: 8%SDS-PAGE, Lysate: 40 µg, Lane: Human placenta tissue, Primary antibody: CSB-PA075804(EPSTI1 Antibody) at dilution 1/2000, Secondary antibody: Goat anti rabbit IgG at 1/8000 dilution, Exposure time: 2 minutes

## Usage

For Research Use Only. Not for use in diagnostic or therapeutic procedures.