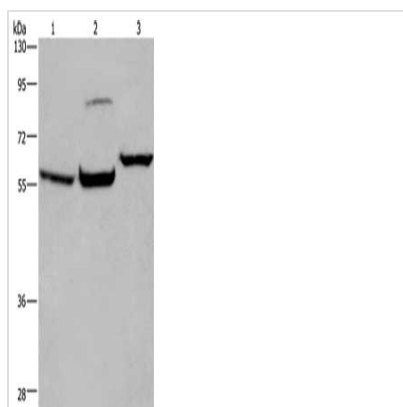




ESR1 Antibody

Product Code	CSB-PA980849
Storage	Upon receipt, store at -20°C or -80°C. Avoid repeated freeze.
Uniprot No.	P03372
Immunogen	Fusion protein of Human ESR1
Raised In	Rabbit
Species Reactivity	Human,Mouse,Rat
Tested Applications	ELISA,WB;ELISA:1:1000-1:2000,WB:1:200-1:1000
Form	Liquid
Conjugate	Non-conjugated
Storage Buffer	-20°C, pH7.4 PBS, 0.05% NaN ₃ , 40% Glycerol
Purification Method	Antigen affinity purification
Isotype	IgG
Immunogen Species	Homo sapiens (Human)
Target Names	ESR1

Image



Gel: 8%SDS-PAGE, Lysate: 40 µg, Lane 1-3:
 Mouse brain tissue, 231 cells, HeLa cells,
 Primary antibody: CSB-PA980849(ESR1
 Antibody) at dilution 1/200, Secondary antibody:
 Goat anti rabbit IgG at 1/8000 dilution, Exposure
 time: 1 minute

Usage

For Research Use Only. Not for use in diagnostic or therapeutic procedures.