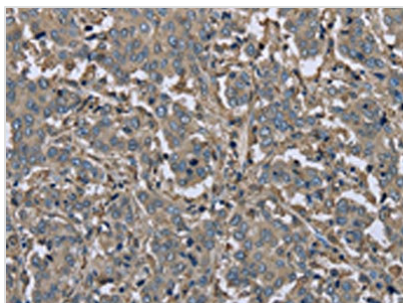




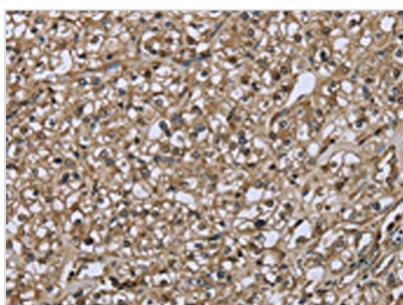
# FBP1 Antibody

<b>Product Code</b>	CSB-PA056820
<b>Storage</b>	Upon receipt, store at -20°C or -80°C. Avoid repeated freeze.
<b>Uniprot No.</b>	P09467
<b>Immunogen</b>	Fusion protein of Human FBP1
<b>Raised In</b>	Rabbit
<b>Species Reactivity</b>	Human, Mouse
<b>Tested Applications</b>	ELISA, WB, IHC; ELISA: 1:2000-1:5000, WB: 1:500-1:2000, IHC: 1:50-1:200
<b>Form</b>	Liquid
<b>Conjugate</b>	Non-conjugated
<b>Storage Buffer</b>	-20°C, pH7.4 PBS, 0.05% NaN <sub>3</sub> , 40% Glycerol
<b>Purification Method</b>	Antigen affinity purification
<b>Isotype</b>	IgG
<b>Immunogen Species</b>	Homo sapiens (Human)
<b>Target Names</b>	FBP1

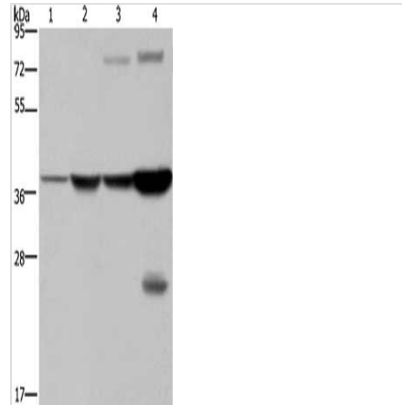
## Image



The image on the left is immunohistochemistry of paraffin-embedded Human liver cancer tissue using CSB-PA056820(FBP1 Antibody) at dilution 1/30, on the right is treated with fusion protein. (Original magnification: ×200)



The image on the left is immunohistochemistry of paraffin-embedded Human prostate cancer tissue using CSB-PA056820(FBP1 Antibody) at dilution 1/30, on the right is treated with fusion protein. (Original magnification: ×200)



Gel: 8%SDS-PAGE, Lysate: 40  $\mu$ g, Lane 1-4:  
Mouse stomach tissue, human fetal liver tissue,  
MCF7 cells, mouse liver tissue tissue, Primary  
antibody: CSB-PA056820(FBP1 Antibody) at  
dilution 1/550, Secondary antibody: Goat anti  
rabbit IgG at 1/8000 dilution, Exposure time: 10  
seconds

## Usage

For Research Use Only. Not for use in diagnostic or therapeutic procedures.