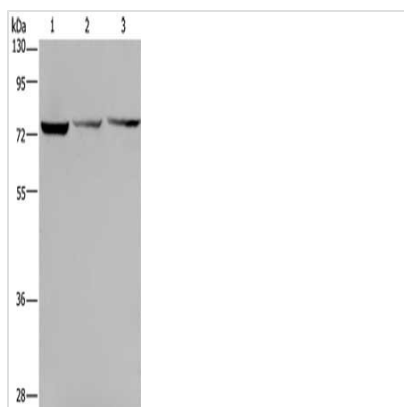




KLHL9 Antibody

Product Code	CSB-PA206501
Storage	Upon receipt, store at -20°C or -80°C. Avoid repeated freeze.
Uniprot No.	Q9P2J3
Immunogen	Fusion protein of Human KLHL9
Raised In	Rabbit
Species Reactivity	Human,Mouse
Tested Applications	ELISA,WB;ELISA:1:1000-1:2000,WB:1:200-1:1000
Form	Liquid
Conjugate	Non-conjugated
Storage Buffer	-20°C, pH7.4 PBS, 0.05% NaN ₃ , 40% Glycerol
Purification Method	Antigen affinity purification
Isotype	IgG
Immunogen Species	Homo sapiens (Human)
Target Names	KLHL9

Image



Gel: 8%SDS-PAGE, Lysate: 40 µg, Lane 1-3: HeLa cells, SKOV3 cells, Jurkat cells, Primary antibody: CSB-PA206501(KLHL9 Antibody) at dilution 1/300, Secondary antibody: Goat anti rabbit IgG at 1/8000 dilution, Exposure time: 1 minute

Usage

For Research Use Only. Not for use in diagnostic or therapeutic procedures.