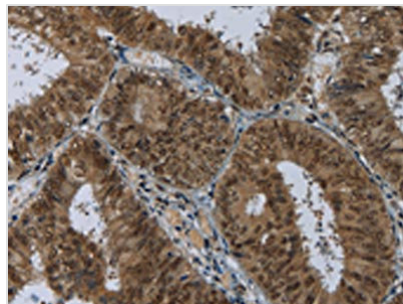




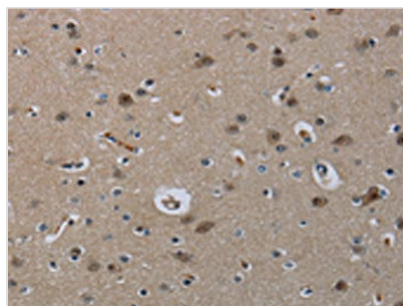
# MRE11A Antibody

<b>Product Code</b>	CSB-PA056873
<b>Storage</b>	Upon receipt, store at -20°C or -80°C. Avoid repeated freeze.
<b>Uniprot No.</b>	P49959
<b>Immunogen</b>	Fusion protein of Human MRE11A
<b>Raised In</b>	Rabbit
<b>Species Reactivity</b>	Human,Mouse,Rat
<b>Tested Applications</b>	ELISA,WB,IHC;ELISA:1:2000-1:5000,WB:1:500-1:2000,IHC:1:100-1:300
<b>Form</b>	Liquid
<b>Conjugate</b>	Non-conjugated
<b>Storage Buffer</b>	-20°C, pH7.4 PBS, 0.05% NaN <sub>3</sub> , 40% Glycerol
<b>Purification Method</b>	Antigen affinity purification
<b>Isotype</b>	IgG
<b>Immunogen Species</b>	Homo sapiens (Human)
<b>Target Names</b>	MRE11

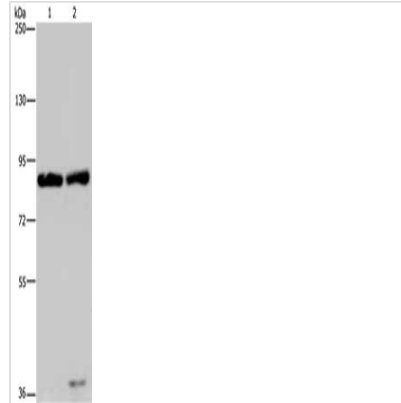
## Image



The image on the left is immunohistochemistry of paraffin-embedded Human colon cancer tissue using CSB-PA056873(MRE11A Antibody) at dilution 1/60, on the right is treated with fusion protein. (Original magnification: ×200)



The image on the left is immunohistochemistry of paraffin-embedded Human brain tissue using CSB-PA056873(MRE11A Antibody) at dilution 1/60, on the right is treated with fusion protein. (Original magnification: ×200)



Gel: 6%SDS-PAGE, Lysate: 40  $\mu$ g, Lane 1-2:  
Raji cells, K562 cells, Primary antibody: CSB-  
PA056873(MRE11A Antibody) at dilution 1/500,  
Secondary antibody: Goat anti rabbit IgG at  
1/8000 dilution, Exposure time: 10 minutes

**Usage**

For Research Use Only. Not for use in diagnostic or therapeutic procedures.