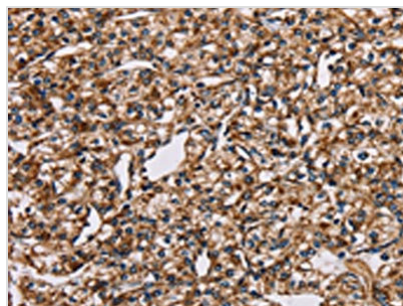




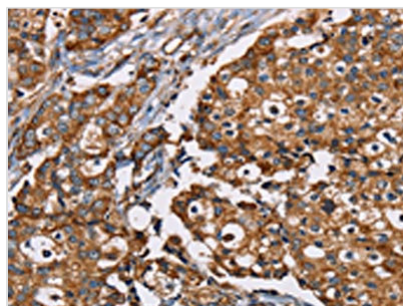
NDUFS1 Antibody

| | |
|----------------------------|---|
| Product Code | CSB-PA568412 |
| Storage | Upon receipt, store at -20°C or -80°C. Avoid repeated freeze. |
| Uniprot No. | P28331 |
| Immunogen | Fusion protein of Human NDUFS1 |
| Raised In | Rabbit |
| Species Reactivity | Human,Mouse,Rat |
| Tested Applications | ELISA,WB,IHC;ELISA:1:2000-1:5000,WB:1:500-1:2000,IHC:1:50-1:200 |
| Form | Liquid |
| Conjugate | Non-conjugated |
| Storage Buffer | -20°C, pH7.4 PBS, 0.05% NaN ₃ , 40% Glycerol |
| Purification Method | Antigen affinity purification |
| Isotype | IgG |
| Immunogen Species | Homo sapiens (Human) |
| Target Names | NDUFS1 |

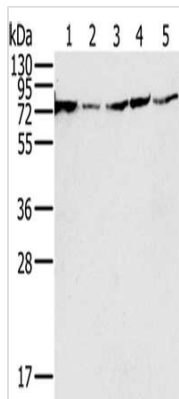
Image



The image on the left is immunohistochemistry of paraffin-embedded Human prostate cancer tissue using CSB-PA568412(NDUFS1 Antibody) at dilution 1/35, on the right is treated with fusion protein. (Original magnification: x200)



The image on the left is immunohistochemistry of paraffin-embedded Human breast cancer tissue using CSB-PA568412(NDUFS1 Antibody) at dilution 1/35, on the right is treated with fusion protein. (Original magnification: x200)



Gel: 10%SDS-PAGE, Lysate: 40 μ g, Lane 1-5:
 293T cells, PC3 cells, hela cells, Jurkat cells,
 Raji cells, Primary antibody: CSB-
 PA568412(NDUFS1 Antibody) at dilution 1/650,
 Secondary antibody: Goat anti rabbit IgG at
 1/8000 dilution, Exposure time: 3 seconds