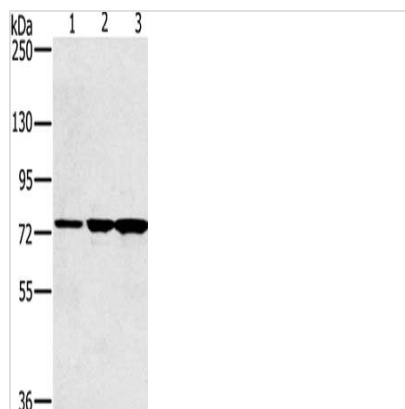




KIRREL2 Antibody

Product Code	CSB-PA995714
Storage	Upon receipt, store at -20°C or -80°C. Avoid repeated freeze.
Uniprot No.	Q6UWL6
Immunogen	Fusion protein of Human KIRREL2
Raised In	Rabbit
Species Reactivity	Human,Mouse
Tested Applications	ELISA,WB;ELISA:1:2000-1:5000,WB:1:500-1:2000
Form	Liquid
Conjugate	Non-conjugated
Storage Buffer	-20°C, pH7.4 PBS, 0.05% NaN ₃ , 40% Glycerol
Purification Method	Antigen affinity purification
Isotype	IgG
Immunogen Species	Homo sapiens (Human)
Target Names	KIRREL2

Image



Gel: 6%SDS-PAGE, Lysate: 40 µg, Lane 1-3: Human testis tissue, Jurkat cells, mouse liver tissue, Primary antibody: CSB-PA995714(KIRREL2 Antibody) at dilution 1/500, Secondary antibody: Goat anti rabbit IgG at 1/8000 dilution, Exposure time: 15 seconds

Usage

For Research Use Only. Not for use in diagnostic or therapeutic procedures.