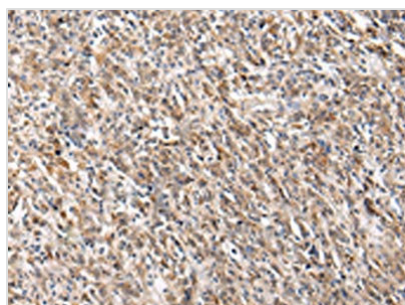




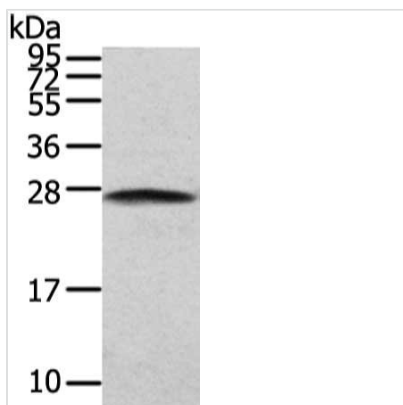
PGRMC2 Antibody

| | |
|----------------------------|---|
| Product Code | CSB-PA986206 |
| Storage | Upon receipt, store at -20°C or -80°C. Avoid repeated freeze. |
| Uniprot No. | O15173 |
| Immunogen | Fusion protein of Human PGRMC2 |
| Raised In | Rabbit |
| Species Reactivity | Human,Mouse,Rat |
| Tested Applications | ELISA,WB,IHC;ELISA:1:1000-1:2000,WB:1:200-1:1000,IHC:1:20-1:100 |
| Form | Liquid |
| Conjugate | Non-conjugated |
| Storage Buffer | -20°C, pH7.4 PBS, 0.05% NaN ₃ , 40% Glycerol |
| Purification Method | Antigen affinity purification |
| Isotype | IgG |
| Immunogen Species | Homo sapiens (Human) |
| Target Names | PGRMC2 |

Image



The image on the left is immunohistochemistry of paraffin-embedded Human gastric cancer tissue using CSB-PA986206(PGRMC2 Antibody) at dilution 1/20, on the right is treated with fusion protein. (Original magnification: X200)



Gel: 12%SDS-PAGE, Lysate: 40µg, Lane: NIH/3T3 cell, Primary antibody: CSB-PA986206(PGRMC2 Antibody) at dilution 1/200 dilution, Secondary antibody: Goat anti rabbit IgG at 1/8000 dilution, Exposure time: 5 seconds

Usage

For Research Use Only. Not for use in diagnostic or therapeutic procedures.