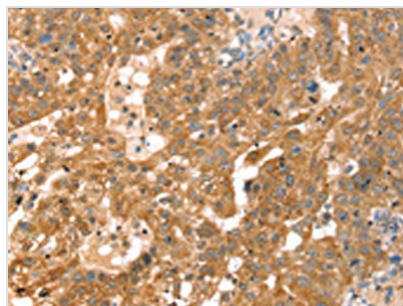




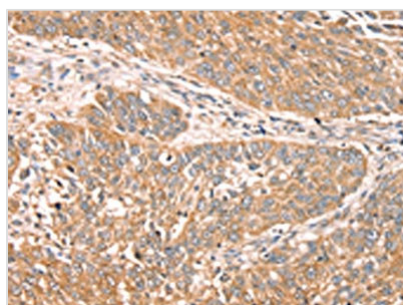
# RPS6KA1 Antibody

|                            |                                                                 |
|----------------------------|-----------------------------------------------------------------|
| <b>Product Code</b>        | CSB-PA121989                                                    |
| <b>Storage</b>             | Upon receipt, store at -20°C or -80°C. Avoid repeated freeze.   |
| <b>Uniprot No.</b>         | Q15418                                                          |
| <b>Immunogen</b>           | Fusion protein of Human RPS6KA1                                 |
| <b>Raised In</b>           | Rabbit                                                          |
| <b>Species Reactivity</b>  | Human,Mouse,Rat                                                 |
| <b>Tested Applications</b> | ELISA,WB,IHC;ELISA:1:2000-1:5000,WB:1:500-1:2000,IHC:1:25-1:100 |
| <b>Form</b>                | Liquid                                                          |
| <b>Conjugate</b>           | Non-conjugated                                                  |
| <b>Storage Buffer</b>      | -20°C, pH7.4 PBS, 0.05% NaN <sub>3</sub> , 40% Glycerol         |
| <b>Purification Method</b> | Antigen affinity purification                                   |
| <b>Isotype</b>             | IgG                                                             |
| <b>Immunogen Species</b>   | Homo sapiens (Human)                                            |
| <b>Target Names</b>        | RPS6KA1                                                         |

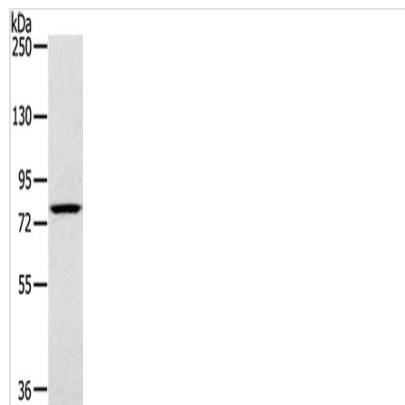
## Image



The image on the left is immunohistochemistry of paraffin-embedded Human breast cancer tissue using CSB-PA121989(RPS6KA1 Antibody) at dilution 1/30, on the right is treated with fusion protein. (Original magnification: x200)



The image on the left is immunohistochemistry of paraffin-embedded Human lung cancer tissue using CSB-PA121989(RPS6KA1 Antibody) at dilution 1/30, on the right is treated with fusion protein. (Original magnification: x200)



Gel: 6%SDS-PAGE, Lysate: 40  $\mu$ g, Lane: K562 cells, Primary antibody: CSB-PA121989(RPS6KA1 Antibody) at dilution 1/400, Secondary antibody: Goat anti rabbit IgG at 1/8000 dilution, Exposure time: 5 seconds

**Usage**

For Research Use Only. Not for use in diagnostic or therapeutic procedures.