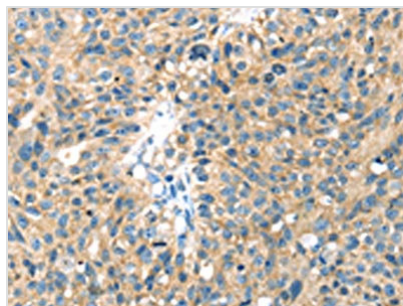




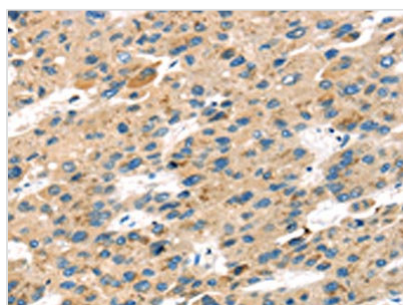
# SENP8 Antibody

<b>Product Code</b>	CSB-PA951733
<b>Storage</b>	Upon receipt, store at -20°C or -80°C. Avoid repeated freeze.
<b>Uniprot No.</b>	Q96LD8
<b>Immunogen</b>	Full length fusion protein
<b>Raised In</b>	Rabbit
<b>Species Reactivity</b>	Human,Mouse,Rat
<b>Tested Applications</b>	ELISA,WB,IHC;ELISA:1:2000-1:5000,WB:1:500-1:2000,IHC:1:25-1:100
<b>Form</b>	Liquid
<b>Conjugate</b>	Non-conjugated
<b>Storage Buffer</b>	-20°C, pH7.4 PBS, 0.05% NaN <sub>3</sub> , 40% Glycerol
<b>Purification Method</b>	Antigen affinity purification
<b>Isotype</b>	IgG
<b>Immunogen Species</b>	Homo sapiens (Human)
<b>Target Names</b>	SENP8

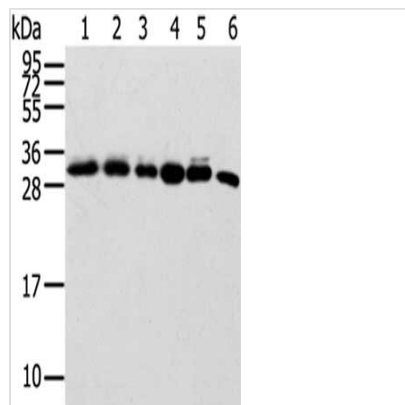
## Image



The image on the left is immunohistochemistry of paraffin-embedded Human breast cancer tissue using CSB-PA951733(SENP8 Antibody) at dilution 1/40, on the right is treated with fusion protein. (Original magnification: ×200)



The image on the left is immunohistochemistry of paraffin-embedded Human liver cancer tissue using CSB-PA951733(SENP8 Antibody) at dilution 1/40, on the right is treated with fusion protein. (Original magnification: ×200)



Gel: 12%SDS-PAGE, Lysate: 40  $\mu$ g, Lane 1-6:  
293T cells, Hela cells, Lovo cells, Raji cells,  
HUEVC cells, Mouse spleen tissue, Primary  
antibody: CSB-PA951733 (SEN8 Antibody) at  
dilution 1/600 dilution, Secondary antibody: Goat  
anti rabbit IgG at 1/8000 dilution, Exposure time:  
20 seconds

**Usage**

For Research Use Only. Not for use in diagnostic or therapeutic procedures.