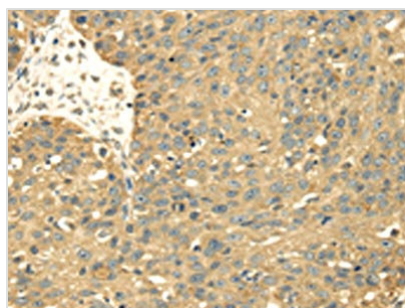




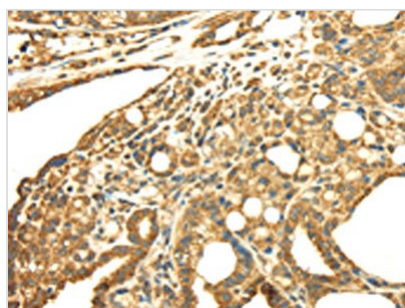
# SRPRB Antibody

<b>Product Code</b>	CSB-PA507142
<b>Storage</b>	Upon receipt, store at -20°C or -80°C. Avoid repeated freeze.
<b>Uniprot No.</b>	Q9Y5M8
<b>Immunogen</b>	Full length fusion protein
<b>Raised In</b>	Rabbit
<b>Species Reactivity</b>	Human,Mouse,Rat
<b>Tested Applications</b>	ELISA,WB,IHC;ELISA:1:2000-1:10000,WB:1:1000-1:5000,IHC:1:25-1:100
<b>Form</b>	Liquid
<b>Conjugate</b>	Non-conjugated
<b>Storage Buffer</b>	-20°C, pH7.4 PBS, 0.05% NaN <sub>3</sub> , 40% Glycerol
<b>Purification Method</b>	Antigen affinity purification
<b>Isotype</b>	IgG
<b>Immunogen Species</b>	Homo sapiens (Human)
<b>Target Names</b>	SRPRB

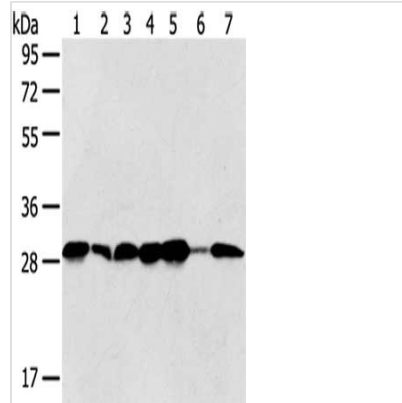
## Image



The image on the left is immunohistochemistry of paraffin-embedded Human breast cancer tissue using CSB-PA507142(SRPRB Antibody) at dilution 1/30, on the right is treated with fusion protein. (Original magnification: x200)



The image on the left is immunohistochemistry of paraffin-embedded Human thyroid cancer tissue using CSB-PA507142(SRPRB Antibody) at dilution 1/30, on the right is treated with fusion protein. (Original magnification: x200)



Gel: 8%SDS-PAGE,Lysate: 40  $\mu$ g,Lane 1-7:  
Jurkat cells, Hela cells, 293T cells, 231 cells,  
HepG2 cells, Human normal liver tissue, Human  
bladder carcinoma tissue,Primary antibody:  
CSB-PA507142(SRPRB Antibody) at dilution  
1/500 dilution,Secondary antibody: Goat anti  
rabbit IgG at 1/8000 dilution,Exposure time: 5  
seconds

**Usage**

For Research Use Only. Not for use in diagnostic or therapeutic procedures.