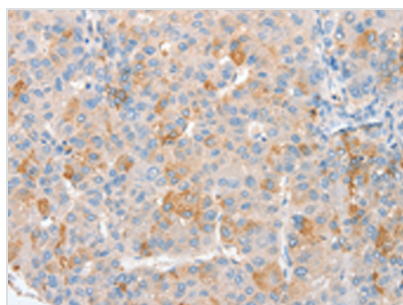




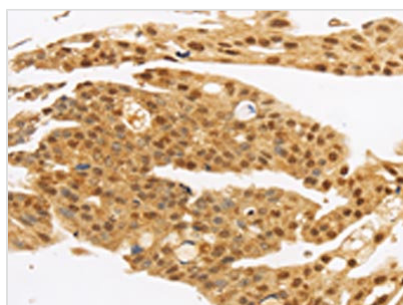
MYC Antibody

Product Code	CSB-PA407491
Storage	Upon receipt, store at -20°C or -80°C. Avoid repeated freeze.
Uniprot No.	P01106
Immunogen	Synthetic peptide: C-EQKLISEEDL conjugated with KLH.
Raised In	Rabbit
Species Reactivity	Human,Rat
Tested Applications	ELISA,WB,IHC;ELISA:1:1000-1:10000,WB:1:1000-1:5000,IHC:1:15-1:50
Form	Liquid
Conjugate	Non-conjugated
Storage Buffer	-20°C, pH7.4 PBS, 0.05% NaN ₃ , 40% Glycerol
Purification Method	Antigen affinity purification
Isotype	IgG
Immunogen Species	Homo sapiens (Human)
Target Names	MYC

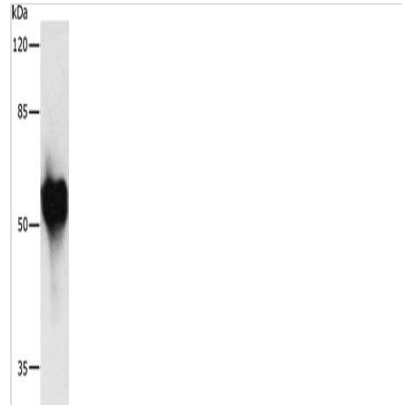
Image



The image on the left is immunohistochemistry of paraffin-embedded Human liver cancer tissue using CSB-PA407491(c-Myc Tag Antibody) at dilution 1/10, on the right is treated with synthetic peptide. (Original magnification: x200)



The image on the left is immunohistochemistry of paraffin-embedded Human gastic cancer tissue using CSB-PA407491(c-Myc Tag Antibody) at dilution 1/10, on the right is treated with synthetic peptide. (Original magnification: x200)



Gel: 10%SDS-PAGE, Lysate: 2 μ g, Lane:
Recombinant HA tagged protein, Primary
antibody: CSB-PA407491(c-Myc Tag Antibody)
at dilution 1/1000, Secondary antibody: Goat anti
rabbit IgG at 1/8000 dilution, Exposure time: 1
second

Usage

For Research Use Only. Not for use in diagnostic or therapeutic procedures.