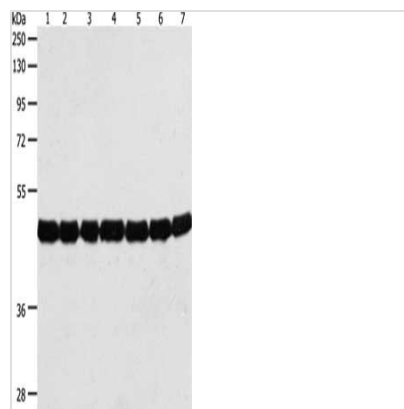




# ACTIN Antibody

<b>Product Code</b>	CSB-PA946648
<b>Storage</b>	Upon receipt, store at -20°C or -80°C. Avoid repeated freeze.
<b>Uniprot No.</b>	P53497
<b>Immunogen</b>	Synthetic peptide of Arabidopsis thaliana actin
<b>Raised In</b>	Rabbit
<b>Species Reactivity</b>	Plants
<b>Tested Applications</b>	ELISA,WB;ELISA:1:500-1:2000,WB:1:500-1:2000
<b>Form</b>	Liquid
<b>Conjugate</b>	Non-conjugated
<b>Storage Buffer</b>	-20°C, pH7.4 PBS, 0.05% NaN <sub>3</sub> , 40% Glycerol
<b>Purification Method</b>	Antigen affinity purification
<b>Isotype</b>	IgG
<b>Immunogen Species</b>	Arabidopsis thaliana (Mouse-ear cress)
<b>Target Names</b>	ACT12

## Image



Gel: 10%SDS-PAGE, Lysate: 50 µg, Lane 1-7: Cinnamomum camphora tissue, Nicotiana tabacum tissue, Triticum aestivuml, Arabidopsis thaliana leaves, Brassica campestris flowers, Brassica campestris, Vicit Faba leaves, Primary antibody: CSB-PA946648(ACTIN Antibody) at dilution 1/500, Secondary antibody: Goat anti rabbit IgG at 1/8000 dilution, Exposure time: 20 seconds

## Usage

For Research Use Only. Not for use in diagnostic or therapeutic procedures.