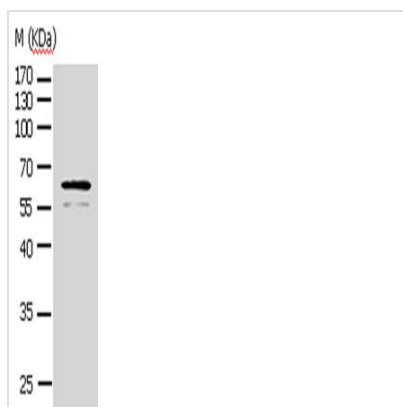




AKT1 Antibody

| | |
|----------------------------|---|
| Product Code | CSB-PA942120 |
| Storage | Upon receipt, store at -20°C or -80°C. Avoid repeated freeze. |
| Uniprot No. | P31749 |
| Immunogen | Synthetic peptide of Human pan-AKT |
| Raised In | Rabbit |
| Species Reactivity | Human,Mouse,Rat |
| Tested Applications | ELISA,WB;ELISA:1:2000-1:10000,WB:1:500-1:1000 |
| Form | Liquid |
| Conjugate | Non-conjugated |
| Storage Buffer | -20°C, pH7.4 PBS, 0.05% NaN ₃ , 40% Glycerol |
| Purification Method | Antigen affinity purification |
| Isotype | IgG |
| Immunogen Species | Homo sapiens (Human) |
| Target Names | AKT1 |

Image



Gel: 10%SDS-PAGE, Lysate: 30 µg, Lane: NIH/3T3 cells, Primary antibody: CSB-PA942120(pan-AKT Antibody) at dilution 1/500, Secondary antibody: Goat anti rabbit IgG at 1/8000 dilution, Exposure time: 10 minutes

Usage

For Research Use Only. Not for use in diagnostic or therapeutic procedures.