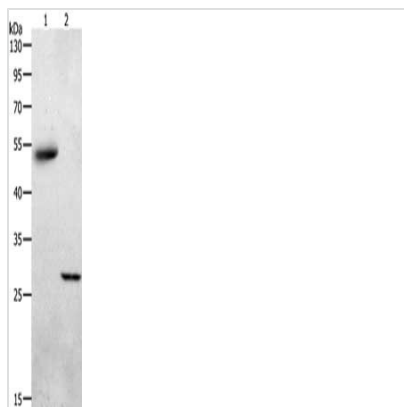




# ADIPOQ Antibody

|                            |   |
|----------------------------|---|
| <b>Product Code</b>        | CSB-PA149289  |
| <b>Storage</b>             | Upon receipt, store at -20°C or -80°C. Avoid repeated freeze. |
| <b>Uniprot No.</b>         | Q15848  |
| <b>Immunogen</b>           | Synthetic peptide of Human ADIPOQ                             |
| <b>Raised In</b>           | Rabbit  |
| <b>Species Reactivity</b>  | Human, Mouse  |
| <b>Tested Applications</b> | ELISA, WB; ELISA: 1:1000-1:2000, WB: 1:200-1:1000             |
| <b>Form</b>                | Liquid  |
| <b>Conjugate</b>           | Non-conjugated  |
| <b>Storage Buffer</b>      | -20°C, pH7.4 PBS, 0.05% NaN <sub>3</sub> , 40% Glycerol       |
| <b>Purification Method</b> | Antigen affinity purification                                 |
| <b>Isotype</b>             | IgG   |
| <b>Immunogen Species</b>   | Homo sapiens (Human)  |
| <b>Target Names</b>        | ADIPOQ  |

## Image



Gel: 10%SDS-PAGE, Lysate: 40 µg, Lane 1-2: Human liver cancer tissue, mouse skeletal muscle tissue, Primary antibody: CSB-PA149289(ADIPOQ Antibody) at dilution 1/550, Secondary antibody: Goat anti rabbit IgG at 1/8000 dilution, Exposure time: 2 minutes

## Usage

For Research Use Only. Not for use in diagnostic or therapeutic procedures.