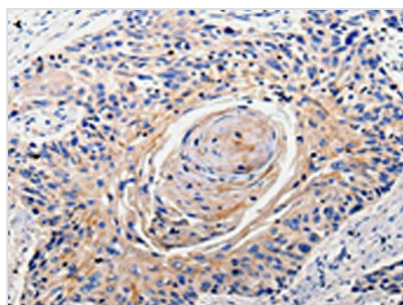




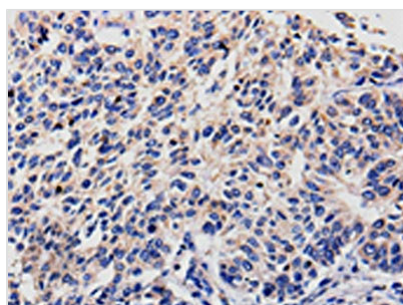
RAB22A Antibody

Product Code	CSB-PA171022
Storage	Upon receipt, store at -20°C or -80°C. Avoid repeated freeze.
Uniprot No.	Q9UL26
Immunogen	Synthetic peptide of Human RAB22A
Raised In	Rabbit
Species Reactivity	Human,Mouse
Tested Applications	ELISA,WB,IHC;ELISA:1:1000-1:5000,WB:1:200-1:1000,IHC:1:50-1:200
Form	Liquid
Conjugate	Non-conjugated
Storage Buffer	-20°C, pH7.4 PBS, 0.05% NaN ₃ , 40% Glycerol
Purification Method	Antigen affinity purification
Isotype	IgG
Immunogen Species	Homo sapiens (Human)
Target Names	RAB22A

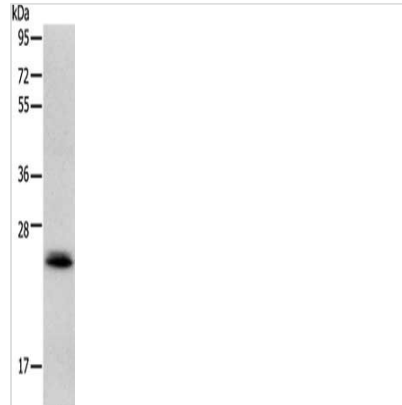
Image



The image is immunohistochemistry of paraffin-embedded Human esophagus cancer tissue using CSB-PA171022(RAB22A Antibody) at dilution 1/100. (Original magnification: x200)



The image is immunohistochemistry of paraffin-embedded Human lung cancer tissue using CSB-PA171022(RAB22A Antibody) at dilution 1/100. (Original magnification: x200)



Gel: 12%SDS-PAGE, Lysate: 40 μ g, Lane:
Mouse heart tissue, Primary antibody: CSB-
PA171022(RAB22A Antibody) at dilution 1/300,
Secondary antibody: Goat anti rabbit IgG at
1/8000 dilution, Exposure time: 10 seconds

Usage

For Research Use Only. Not for use in diagnostic or therapeutic procedures.