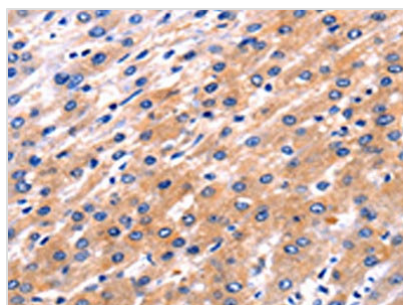




RAB39A Antibody

Product Code	CSB-PA298750
Storage	Upon receipt, store at -20°C or -80°C. Avoid repeated freeze.
Uniprot No.	Q14964
Immunogen	Synthetic peptide of Human RAB39
Raised In	Rabbit
Species Reactivity	Human, Mouse
Tested Applications	ELISA, IHC; ELISA: 1:500-1:2000, IHC: 1:5-1:20
Form	Liquid
Conjugate	Non-conjugated
Storage Buffer	-20°C, pH7.4 PBS, 0.05% NaN ₃ , 40% Glycerol
Purification Method	Antigen affinity purification
Isotype	IgG
Immunogen Species	Homo sapiens (Human)
Target Names	RAB39A

Image



The image on the left is immunohistochemistry of paraffin-embedded Human liver cancer tissue using CSB-PA298750(RAB39A Antibody) at dilution 1/5, on the right is treated with synthetic peptide. (Original magnification: x200)

Usage For Research Use Only. Not for use in diagnostic or therapeutic procedures.