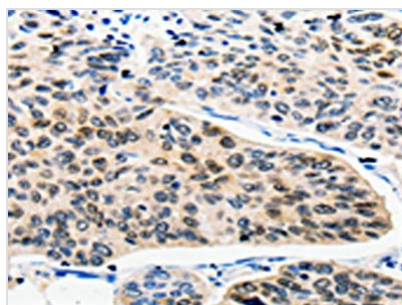




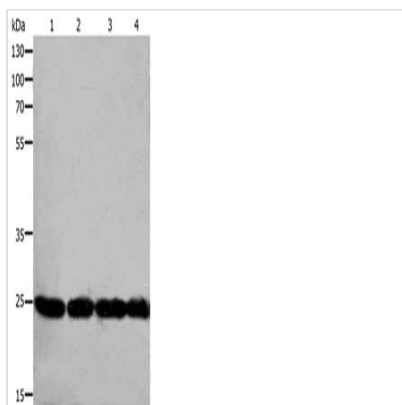
RAN Antibody

Product Code	CSB-PA998992
Storage	Upon receipt, store at -20°C or -80°C. Avoid repeated freeze.
Uniprot No.	P62826
Immunogen	Synthetic peptide of Human RAN
Raised In	Rabbit
Species Reactivity	Human,Mouse,Rat
Tested Applications	ELISA,WB,IHC;ELISA:1:1000-1:5000,WB:1:200-1:1000,IHC:1:25-1:100
Form	Liquid
Conjugate	Non-conjugated
Storage Buffer	-20°C, pH7.4 PBS, 0.05% NaN ₃ , 40% Glycerol
Purification Method	Antigen affinity purification
Isotype	IgG
Immunogen Species	Homo sapiens (Human)
Target Names	RAN

Image



The image on the left is immunohistochemistry of paraffin-embedded Human lung cancer tissue using CSB-PA998992(RAN Antibody) at dilution 1/25, on the right is treated with synthetic peptide. (Original magnification: x200)



Gel: 10%SDS-PAGE, Lysate: 30 µg, Lane 1-4: Hela cells, NIH/3T3 cells, HepG2 cells, Mouse testis tissue, Primary antibody: CSB-PA998992(RAN Antibody) at dilution 1/400, Secondary antibody: Goat anti rabbit IgG at 1/8000 dilution, Exposure time: 1 minute