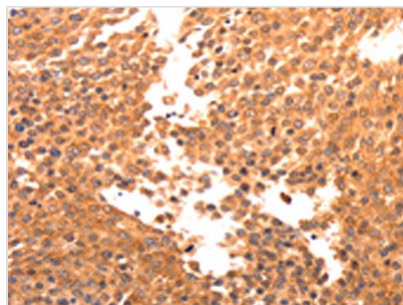




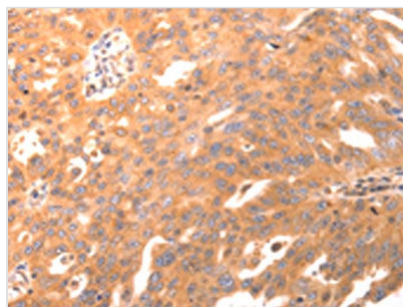
BDKRB2 Antibody

Product Code	CSB-PA574868
Storage	Upon receipt, store at -20°C or -80°C. Avoid repeated freeze.
Uniprot No.	P30411
Immunogen	Synthetic peptide of Human BDKRB2
Raised In	Rabbit
Species Reactivity	Human,Mouse,Rat
Tested Applications	ELISA,WB,IHC;ELISA:1:2000-1:5000,WB:1:200-1:1000,IHC:1:50-1:200
Form	Liquid
Conjugate	Non-conjugated
Storage Buffer	-20°C, pH7.4 PBS, 0.05% NaN ₃ , 40% Glycerol
Purification Method	Antigen affinity purification
Isotype	IgG
Product Type	Polyclonal Antibody
Immunogen Species	Homo sapiens (Human)
Target Names	BDKRB2

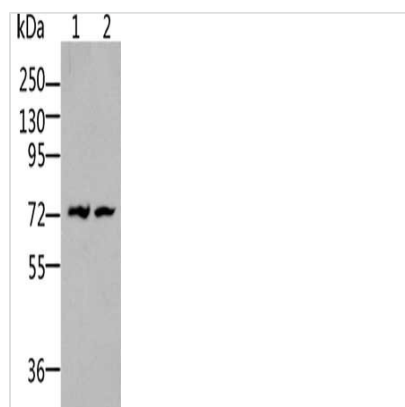
Image



The image on the left is immunohistochemistry of paraffin-embedded Human breast cancer tissue using CSB-PA574868(BDKRB2 Antibody) at dilution 1/30, on the right is treated with synthetic peptide. (Original magnification: ×200)



The image on the left is immunohistochemistry of paraffin-embedded Human ovarian cancer tissue using CSB-PA574868(BDKRB2 Antibody) at dilution 1/30, on the right is treated with synthetic peptide. (Original magnification: ×200)



Gel: 10%SDS-PAGE, Lysate: 50 μ g, Lane 1-2:
Human leiomyosarcoma tissue, NIH/3T3 cells,
Primary antibody: CSB-PA574868(BDKRB2
Antibody) at dilution 1/500, Secondary antibody:
Goat anti rabbit IgG at 1/8000 dilution, Exposure
time: 1 minute