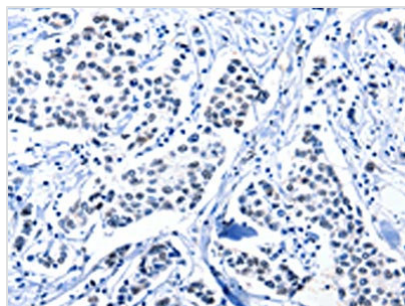




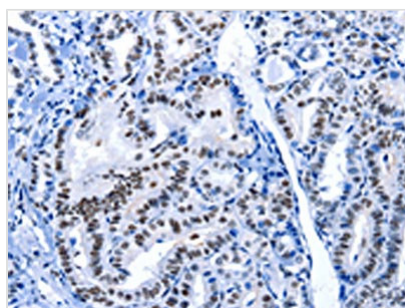
POU2AF1 Antibody

Product Code	CSB-PA856023
Storage	Upon receipt, store at -20°C or -80°C. Avoid repeated freeze.
Uniprot No.	Q16633
Immunogen	Synthetic peptide of Human POU2AF1
Raised In	Rabbit
Species Reactivity	Human,Mouse
Tested Applications	ELISA,IHC;ELISA:1:1000-1:2000,IHC:1:10-1:50
Form	Liquid
Conjugate	Non-conjugated
Storage Buffer	-20°C, pH7.4 PBS, 0.05% NaN ₃ , 40% Glycerol
Purification Method	Antigen affinity purification
Isotype	IgG
Immunogen Species	Homo sapiens (Human)
Target Names	POU2AF1

Image



The image on the left is immunohistochemistry of paraffin-embedded Human breast cancer tissue using CSB-PA856023(POU2AF1 Antibody) at dilution 1/15, on the right is treated with synthetic peptide. (Original magnification: x200)



The image on the left is immunohistochemistry of paraffin-embedded Human thyroid cancer tissue using CSB-PA856023(POU2AF1 Antibody) at dilution 1/15, on the right is treated with synthetic peptide. (Original magnification: x200)