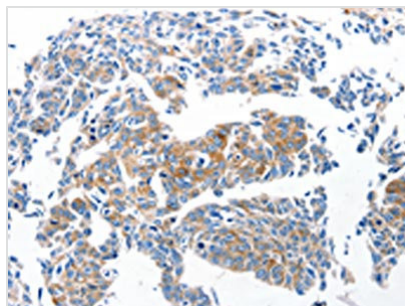




Ccl6 Antibody

Product Code	CSB-PA031049
Storage	Upon receipt, store at -20°C or -80°C. Avoid repeated freeze.
Uniprot No.	P27784
Immunogen	Synthetic peptide of Mouse CCL6
Raised In	Rabbit
Species Reactivity	Human,Mouse
Tested Applications	ELISA,IHC;ELISA:1:500-1:5000,IHC:1:25-1:100
Form	Liquid
Conjugate	Non-conjugated
Storage Buffer	-20°C, pH7.4 PBS, 0.05% NaN ₃ , 40% Glycerol
Purification Method	Antigen affinity purification
Isotype	IgG
Immunogen Species	Mus musculus (Mouse)
Target Names	Ccl6

Image



The image on the left is immunohistochemistry of paraffin-embedded Human lung cancer tissue using CSB-PA031049(Ccl6 Antibody) at dilution 1/50, on the right is treated with synthetic peptide. (Original magnification: x200)