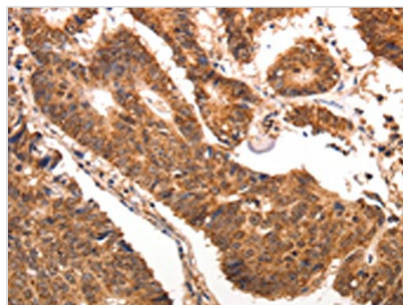




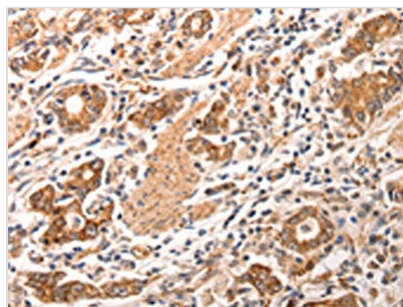
CCL17 Antibody

Product Code	CSB-PA113746
Storage	Upon receipt, store at -20°C or -80°C. Avoid repeated freeze.
Uniprot No.	Q92583
Immunogen	Synthetic peptide of Human CCL17
Raised In	Rabbit
Species Reactivity	Human,Mouse
Tested Applications	ELISA,WB,IHC;ELISA:1:2000-1:5000,WB:1:500-1:2000,IHC:1:100-1:300
Form	Liquid
Conjugate	Non-conjugated
Storage Buffer	-20°C, pH7.4 PBS, 0.05% NaN ₃ , 40% Glycerol
Purification Method	Antigen affinity purification
Isotype	IgG
Alias	chemokine (C-C motif) ligand 17
Immunogen Species	Homo sapiens (Human)
Target Names	CCL17

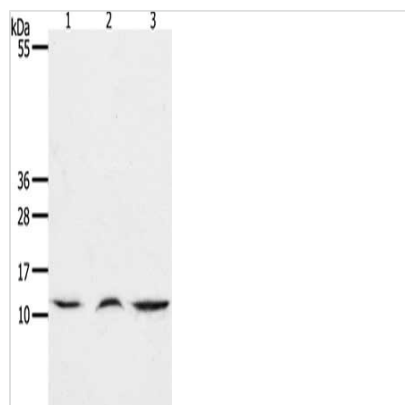
Image



The image is immunohistochemistry of paraffin-embedded human colon cancer tissue using CSB-PA113746(CCL17 Antibody) at dilution 1/70. (Original magnification: ×200)



The image is immunohistochemistry of paraffin-embedded human gastric cancer tissue using CSB-PA113746(CCL17 Antibody) at dilution 1/70. (Original magnification: ×200)



Gel: 15%SDS-PAGE, Lysate: 40 μ g, Lane 1-3:
 Mouse lung tissue, Mouse thymus tissue, human
 fetal muscle tissue, Primary antibody: CSB-
 PA113746(CCL17 Antibody) at dilution 1/1300,
 Secondary antibody: Goat anti rabbit IgG at
 1/8000 dilution, Exposure time: 45 seconds