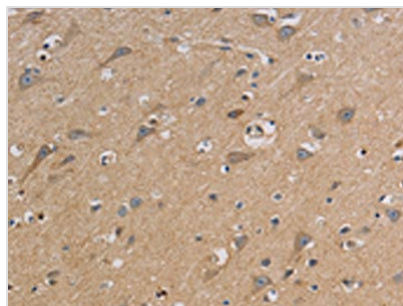




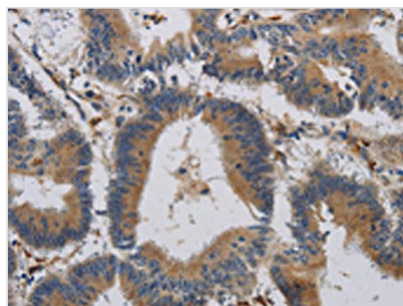
CCR2 Antibody

Product Code	CSB-PA171419
Storage	Upon receipt, store at -20°C or -80°C. Avoid repeated freeze.
Uniprot No.	P41597
Immunogen	Synthetic peptide of Human CCR2
Raised In	Rabbit
Species Reactivity	Human,Mouse
Tested Applications	ELISA,WB,IHC;ELISA:1:2000-1:5000,WB:1:500-1:2000,IHC:1:25-1:100
Form	Liquid
Conjugate	Non-conjugated
Storage Buffer	-20°C, pH7.4 PBS, 0.05% NaN ₃ , 40% Glycerol
Purification Method	Antigen affinity purification
Isotype	IgG
Immunogen Species	Homo sapiens (Human)
Target Names	CCR2

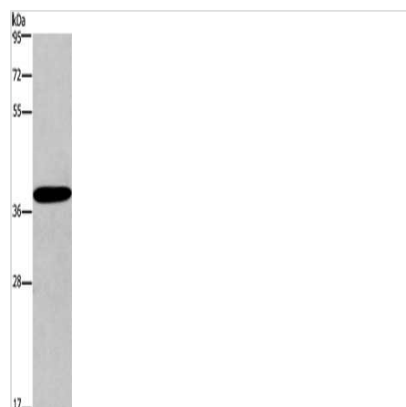
Image



The image on the left is immunohistochemistry of paraffin-embedded Human brain tissue using CSB-PA171419(CCR2 Antibody) at dilution 1/20, on the right is treated with synthetic peptide. (Original magnification: ×200)



The image on the left is immunohistochemistry of paraffin-embedded Human colon cancer tissue using CSB-PA171419(CCR2 Antibody) at dilution 1/20, on the right is treated with synthetic peptide. (Original magnification: ×200)



Gel: 8%SDS-PAGE, Lysate: 40 μ g, Lane: Mouse skin tissue, Primary antibody: CSB-PA171419(CCR2 Antibody) at dilution 1/450, Secondary antibody: Goat anti rabbit IgG at 1/8000 dilution, Exposure time: 5 minutes