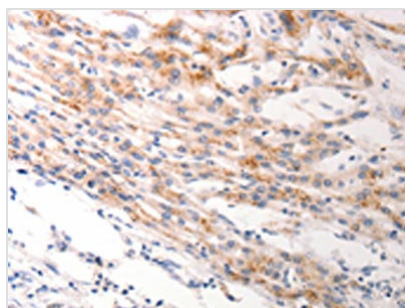




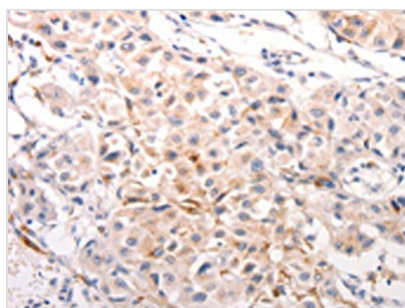
KRT6A/KRT6B/KRT6C Antibody

| | |
|----------------------------|---------------------------------------------------------------|
| Product Code | CSB-PA181038 |
| Storage | Upon receipt, store at -20°C or -80°C. Avoid repeated freeze. |
| Uniprot No. | P02538/P04259/P48668 |
| Immunogen | Synthetic peptide of Human KRT6A/KRT6B/KRT6C |
| Raised In | Rabbit |
| Species Reactivity | Human, Mouse |
| Tested Applications | ELISA, IHC; ELISA: 1:1000-1:5000, IHC: 1:25-1:100 |
| Form | Liquid |
| Conjugate | Non-conjugated |
| Storage Buffer | -20°C, pH7.4 PBS, 0.05% NaN ₃ , 40% Glycerol |
| Purification Method | Antigen affinity purification |
| Isotype | IgG |
| Immunogen Species | Homo sapiens (Human) |
| Target Names | KRT6A/KRT6B/KRT6C |

Image



The image on the left is immunohistochemistry of paraffin-embedded Human lung cancer tissue using CSB-PA181038(KRT6A/KRT6B/KRT6C Antibody) at dilution 1/40, on the right is treated with synthetic peptide. (Original magnification: x200)



The image on the left is immunohistochemistry of paraffin-embedded Human breast cancer tissue using CSB-PA181038(KRT6A/KRT6B/KRT6C/KRT6B/KRT6C Antibody) at dilution 1/40, on the right is treated with synthetic peptide. (Original magnification: x200)

Usage

For Research Use Only. Not for use in diagnostic or therapeutic procedures.