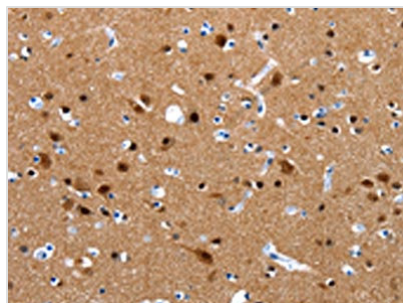




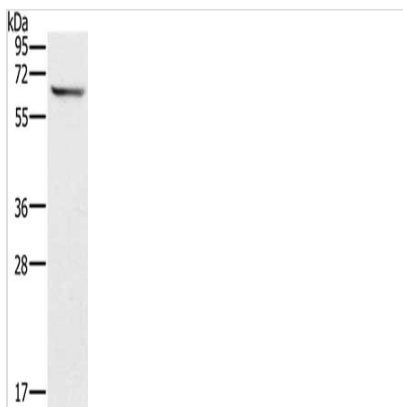
# CRMP1 Antibody

|                            |   |
|----------------------------|---|
| <b>Product Code</b>        | CSB-PA695187  |
| <b>Storage</b>             | Upon receipt, store at -20°C or -80°C. Avoid repeated freeze.   |
| <b>Uniprot No.</b>         | Q14194  |
| <b>Immunogen</b>           | Synthetic peptide of Human CRMP1                                |
| <b>Raised In</b>           | Rabbit  |
| <b>Species Reactivity</b>  | Human,Mouse,Rat   |
| <b>Tested Applications</b> | ELISA,WB,IHC;ELISA:1:1000-1:5000,WB:1:500-1:1000,IHC:1:25-1:100 |
| <b>Form</b>                | Liquid  |
| <b>Conjugate</b>           | Non-conjugated  |
| <b>Storage Buffer</b>      | -20°C, pH7.4 PBS, 0.05% NaN <sub>3</sub> , 40% Glycerol         |
| <b>Purification Method</b> | Antigen affinity purification                                   |
| <b>Isotype</b>             | IgG   |
| <b>Immunogen Species</b>   | Homo sapiens (Human)  |
| <b>Target Names</b>        | CRMP1   |

## Image



The image on the left is immunohistochemistry of paraffin-embedded Human brain tissue using CSB-PA695187(CRMP1 Antibody) at dilution 1/15, on the right is treated with synthetic peptide. (Original magnification: x200)



Gel: 10%SDS-PAGE, Lysate: 30 µg, Lane: Mouse brain tissue, Primary antibody: CSB-PA695187(CRMP1 Antibody) at dilution 1/500, Secondary antibody: Goat anti rabbit IgG at 1/8000 dilution, Exposure time: 20 seconds

## Usage

For Research Use Only. Not for use in diagnostic or therapeutic procedures.