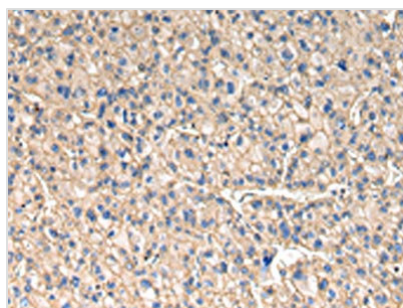




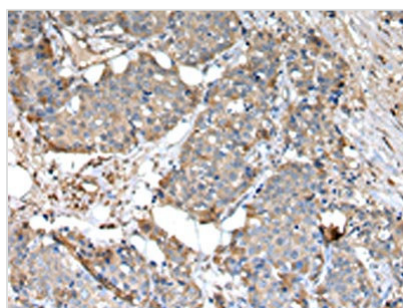
SLC1A1 Antibody

| | |
|----------------------------|---|
| Product Code | CSB-PA521183 |
| Storage | Upon receipt, store at -20°C or -80°C. Avoid repeated freeze. |
| Uniprot No. | P43005 |
| Immunogen | Synthetic peptide of Human SLC1A1 |
| Raised In | Rabbit |
| Species Reactivity | Human |
| Tested Applications | ELISA,WB,IHC;ELISA:1:2000-1:5000,WB:1:500-1:2000,IHC:1:25-1:100 |
| Form | Liquid |
| Conjugate | Non-conjugated |
| Storage Buffer | -20°C, pH7.4 PBS, 0.05% NaN ₃ , 40% Glycerol |
| Purification Method | Antigen affinity purification |
| Isotype | IgG |
| Immunogen Species | Homo sapiens (Human) |
| Target Names | SLC1A1 |

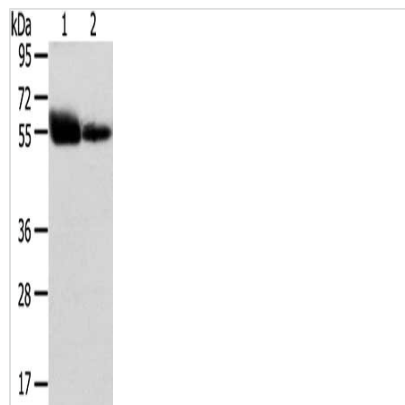
Image



The image on the left is immunohistochemistry of paraffin-embedded Human liver cancer tissue using CSB-PA521183(SLC1A1 Antibody) at dilution 1/30, on the right is treated with synthetic peptide. (Original magnification: x200)



The image on the left is immunohistochemistry of paraffin-embedded Human breast cancer tissue using CSB-PA521183(SLC1A1 Antibody) at dilution 1/30, on the right is treated with synthetic peptide. (Original magnification: x200)



Gel: 8%SDS-PAGE, Lysate: 40 μ g, Lane 1-2:
Human placenta tissue and normal liver tissue,
Primary antibody: CSB-PA521183(SLC1A1
Antibody) at dilution 1/400 dilution, Secondary
antibody: Goat anti rabbit IgG at 1/8000 dilution,
Exposure time: 4 minutes

Usage

For Research Use Only. Not for use in diagnostic or therapeutic procedures.