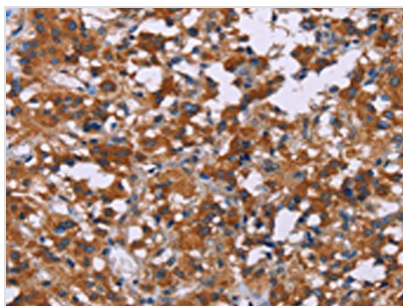




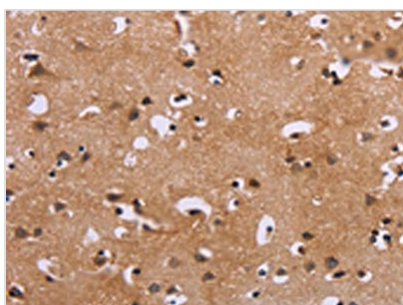
MAPK1/MAPK3 Antibody

Product Code	CSB-PA152806
Storage	Upon receipt, store at -20°C or -80°C. Avoid repeated freeze.
Uniprot No.	P28482/P27361
Immunogen	Synthetic peptide of Human MAPK1/MAPK3
Raised In	Rabbit
Species Reactivity	Human, Mouse
Tested Applications	ELISA, WB, IHC; ELISA: 1:2000-1:5000, WB: 1:500-1:2000, IHC: 1:50-1:200
Form	Liquid
Conjugate	Non-conjugated
Storage Buffer	-20°C, pH7.4 PBS, 0.05% NaN ₃ , 40% Glycerol
Purification Method	Antigen affinity purification
Isotype	IgG
Immunogen Species	Homo sapiens (Human)
Target Names	MAPK1/MAPK3

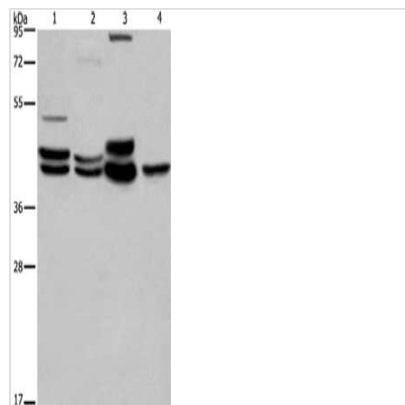
Image



The image on the left is immunohistochemistry of paraffin-embedded Human thyroid cancer tissue using CSB-PA152806(MAPK1/MAPK3 Antibody) at dilution 1/30, on the right is treated with synthetic peptide. (Original magnification: x200)



The image on the left is immunohistochemistry of paraffin-embedded Human brain tissue using CSB-PA152806(MAPK1/MAPK3 Antibody) at dilution 1/30, on the right is treated with synthetic peptide. (Original magnification: x200)



Gel: 8%SDS-PAGE,Lysate: 40 μ g,Lane 1-4:
293T cells, Human brain malignant glioma
tissue, Mouse brain tissue, Human
hepatocellular carcinoma tissue,Primary
antibody: CSB-PA152806(MAPK1/MAPK3
Antibody) at dilution 1/550 dilution,Secondary
antibody: Goat anti rabbit IgG at 1/8000
dilution,Exposure time: 20 seconds

Usage

For Research Use Only. Not for use in diagnostic or therapeutic procedures.