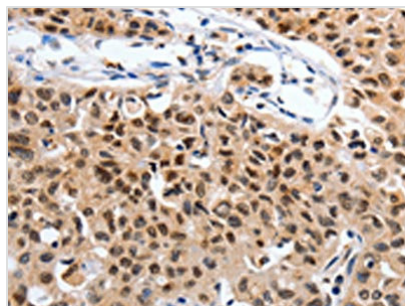




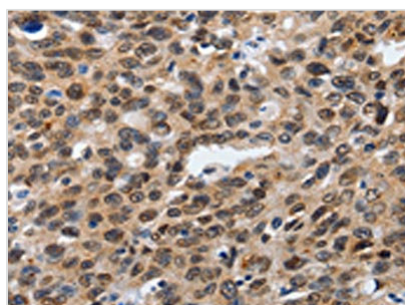
SUMO1 Antibody

Product Code	CSB-PA314476
Storage	Upon receipt, store at -20°C or -80°C. Avoid repeated freeze.
Uniprot No.	P63165
Immunogen	Synthetic peptide of Human SUMO1
Raised In	Rabbit
Species Reactivity	Human,Mouse,Rat
Tested Applications	ELISA,WB,IHC;ELISA:1:1000-1:5000,WB:1:100-1:500,IHC:1:25-1:100
Form	Liquid
Conjugate	Non-conjugated
Storage Buffer	-20°C, pH7.4 PBS, 0.05% NaN ₃ , 40% Glycerol
Purification Method	Antigen affinity purification
Isotype	IgG
Immunogen Species	Homo sapiens (Human)
Target Names	SUMO1

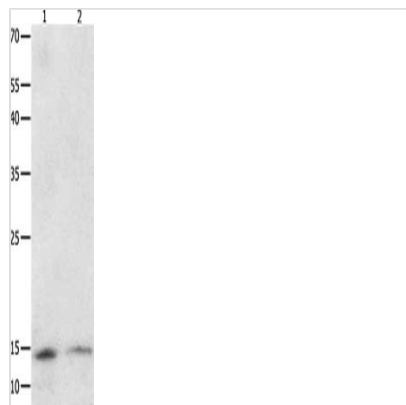
Image



The image on the left is immunohistochemistry of paraffin-embedded Human lung cancer tissue using CSB-PA314476(SUMO1 Antibody) at dilution 1/20, on the right is treated with synthetic peptide. (Original magnification: x200)



The image on the left is immunohistochemistry of paraffin-embedded Human ovarian cancer tissue using CSB-PA314476(SUMO1 Antibody) at dilution 1/20, on the right is treated with synthetic peptide. (Original magnification: x200)



Gel: 10+12+15%SDS-PAGE, Lysate: 40 μ g,
Lane 1-2: Jukart cells, A549 cells, Primary
antibody: CSB-PA314476(SUMO1 Antibody) at
dilution 1/350, Secondary antibody: Goat anti
rabbit IgG at 1/8000 dilution, Exposure time: 10
minutes

Usage

For Research Use Only. Not for use in diagnostic or therapeutic procedures.