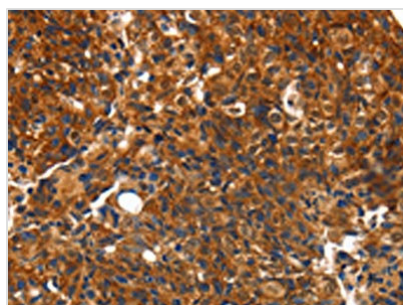




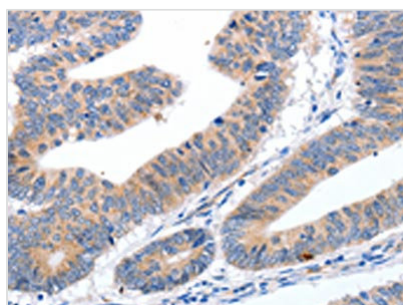
CMTM3 Antibody

Product Code	CSB-PA708217
Storage	Upon receipt, store at -20°C or -80°C. Avoid repeated freeze.
Uniprot No.	Q96MX0
Immunogen	Synthetic peptide of Human CMTM3
Raised In	Rabbit
Species Reactivity	Human,Mouse
Tested Applications	ELISA,WB,IHC;ELISA:1:1000-1:5000,WB:1:500-1:2000,IHC:1:25-1:100
Form	Liquid
Conjugate	Non-conjugated
Storage Buffer	-20°C, pH7.4 PBS, 0.05% NaN ₃ , 40% Glycerol
Purification Method	Antigen affinity purification
Isotype	IgG
Immunogen Species	Homo sapiens (Human)
Target Names	CMTM3

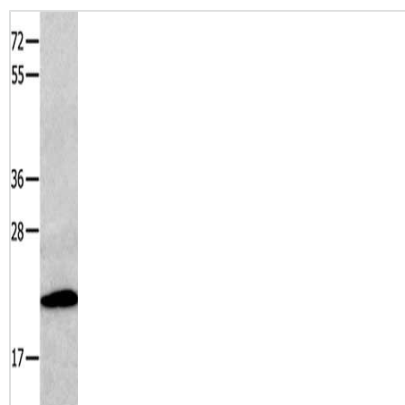
Image



The image on the left is immunohistochemistry of paraffin-embedded Human breast cancer tissue using CSB-PA708217(CMTM3 Antibody) at dilution 1/10, on the right is treated with synthetic peptide. (Original magnification: x200)



The image on the left is immunohistochemistry of paraffin-embedded Human colon cancer tissue using CSB-PA708217(CMTM3 Antibody) at dilution 1/10, on the right is treated with synthetic peptide. (Original magnification: x200)



Gel: 10+12%SDS-PAGE, Lysate: 40 μ g, Lane:
Human fetal kidney tissue, Primary antibody:
CSB-PA708217(CMTM3 Antibody) at dilution
1/200, Secondary antibody: Goat anti rabbit IgG
at 1/8000 dilution, Exposure time: 1 minute