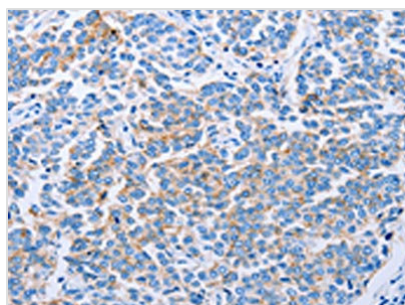




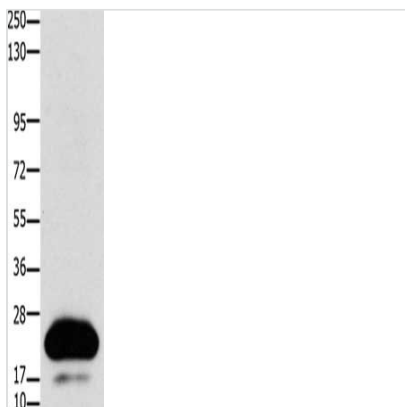
CLDN4 Antibody

Product Code	CSB-PA275606
Storage	Upon receipt, store at -20°C or -80°C. Avoid repeated freeze.
Uniprot No.	O14493
Immunogen	Synthetic peptide of Human CLDN4
Raised In	Rabbit
Species Reactivity	Human, Mouse
Tested Applications	ELISA, WB, IHC; ELISA: 1:1000-1:10000, WB: 1:1000-1:3000, IHC: 1:25-1:100
Form	Liquid
Conjugate	Non-conjugated
Storage Buffer	-20°C, pH7.4 PBS, 0.05% NaN ₃ , 40% Glycerol
Purification Method	Antigen affinity purification
Isotype	IgG
Immunogen Species	Homo sapiens (Human)
Target Names	CLDN4

Image



The image on the left is immunohistochemistry of paraffin-embedded Human breast cancer tissue using CSB-PA275606 (CLDN4 Antibody) at dilution 1/50, on the right is treated with synthetic peptide. (Original magnification: x200)



Gel: 10+12% SDS-PAGE, Lysate: 30 µg, Lane: HT29 cells, Primary antibody: CSB-PA275606 (CLDN4 Antibody) at dilution 1/1100, Secondary antibody: Goat anti rabbit IgG at 1/8000 dilution, Exposure time: 30 seconds

Usage

For Research Use Only. Not for use in diagnostic or therapeutic procedures.