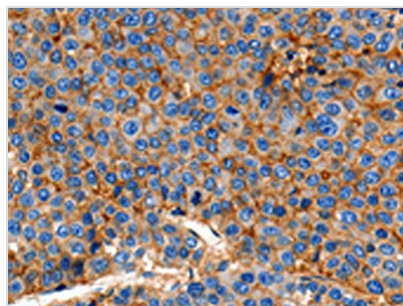




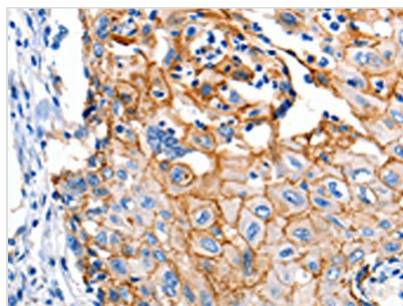
CLDN1 Antibody

Product Code	CSB-PA983237
Storage	Upon receipt, store at -20°C or -80°C. Avoid repeated freeze.
Uniprot No.	O95832
Immunogen	Synthetic peptide of Human CLDN1
Raised In	Rabbit
Species Reactivity	Human,Mouse,Rat
Tested Applications	ELISA,WB,IHC;ELISA:1:1000-1:10000,WB:1:1000-1:3000,IHC:1:100-1:300
Form	Liquid
Conjugate	Non-conjugated
Storage Buffer	-20°C, pH7.4 PBS, 0.05% NaN ₃ , 40% Glycerol
Purification Method	Antigen affinity purification
Isotype	IgG
Immunogen Species	Homo sapiens (Human)
Target Names	CLDN1

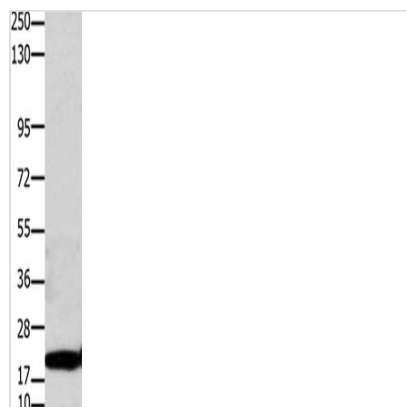
Image



The image on the left is immunohistochemistry of paraffin-embedded Human esophagus cancer tissue using CSB-PA983237(CLDN1 Antibody) at dilution 1/150, on the right is treated with synthetic peptide. (Original magnification: X200)



The image on the left is immunohistochemistry of paraffin-embedded Human cervical cancer tissue using CSB-PA983237(CLDN1 Antibody) at dilution 1/150, on the right is treated with synthetic peptide. (Original magnification: X200)



Gel: 10%SDS-PAGE, Lysate: 30μg, Lane: Hela cells, Primary antibody: CSB-PA983237(CLDN1 Antibody) at dilution 1/1100, Secondary antibody: Goat anti rabbit IgG at 1/8000 dilution, Exposure time: 40 seconds