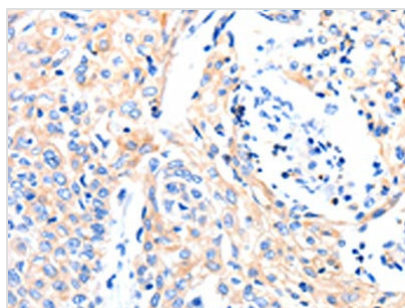




GAS6 Antibody

Product Code	CSB-PA108949
Storage	Upon receipt, store at -20°C or -80°C. Avoid repeated freeze.
Uniprot No.	Q14393
Immunogen	Synthetic peptide of Human GAS6
Raised In	Rabbit
Species Reactivity	Human
Tested Applications	ELISA,IHC;ELISA:1:1000-1:2000,IHC:1:5-1:20
Form	Liquid
Conjugate	Non-conjugated
Storage Buffer	-20°C, pH7.4 PBS, 0.05% NaN ₃ , 40% Glycerol
Purification Method	Antigen affinity purification
Isotype	IgG
Immunogen Species	Homo sapiens (Human)
Target Names	GAS6

Image



The image on the left is immunohistochemistry of paraffin-embedded Human cervical cancer tissue using CSB-PA108949(GAS6 Antibody) at dilution 1/8, on the right is treated with synthetic peptide. (Original magnification: x200)

Usage For Research Use Only. Not for use in diagnostic or therapeutic procedures.