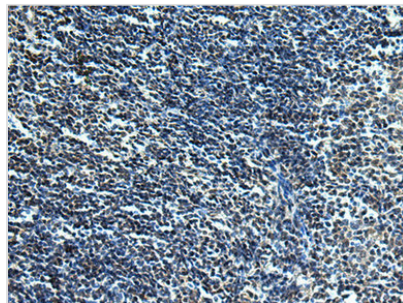




# SLC2A12 Antibody

<b>Product Code</b>	CSB-PA067005
<b>Storage</b>	Upon receipt, store at -20°C or -80°C. Avoid repeated freeze.
<b>Uniprot No.</b>	Q8TD20
<b>Immunogen</b>	Synthetic peptide of Human SLC2A12
<b>Raised In</b>	Rabbit
<b>Species Reactivity</b>	Human
<b>Tested Applications</b>	ELISA,IHC;ELISA:1:1000-1:2000,IHC:1:50-1:100
<b>Form</b>	Liquid
<b>Conjugate</b>	Non-conjugated
<b>Storage Buffer</b>	-20°C, pH7.4 PBS, 0.05% NaN <sub>3</sub> , 40% Glycerol
<b>Purification Method</b>	Antigen affinity purification
<b>Isotype</b>	IgG
<b>Alias</b>	solute carrier family 2 (facilitated glucose transporter), member 12
<b>Immunogen Species</b>	Homo sapiens (Human)
<b>Target Names</b>	SLC2A12

## Image



The image is immunohistochemistry of paraffin-embedded Human tonsil tissue using CSB-PA067005 at dilution 1/30. (Original magnification: x200)