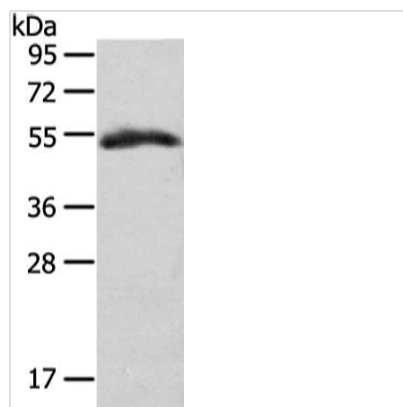




# GLRA1 Antibody

<b>Product Code</b>	CSB-PA569411
<b>Storage</b>	Upon receipt, store at -20°C or -80°C. Avoid repeated freeze.
<b>Uniprot No.</b>	P23415
<b>Immunogen</b>	Synthetic peptide of Human GLRA1
<b>Raised In</b>	Rabbit
<b>Species Reactivity</b>	Human,Mouse,Rat
<b>Tested Applications</b>	ELISA,WB;ELISA:1:2000-1:5000,WB:1:500-1:2000
<b>Form</b>	Liquid
<b>Conjugate</b>	Non-conjugated
<b>Storage Buffer</b>	-20°C, pH7.4 PBS, 0.05% NaN <sub>3</sub> , 40% Glycerol
<b>Purification Method</b>	Antigen affinity purification
<b>Isotype</b>	IgG
<b>Immunogen Species</b>	Homo sapiens (Human)
<b>Target Names</b>	GLRA1

## Image



Gel: 8%SDS-PAGE, Lysate: 40 µg, Lane: Human placenta tissue, Primary antibody: CSB-PA569411(GLRA1 Antibody) at dilution 1/350 dilution, Secondary antibody: Goat anti rabbit IgG at 1/8000 dilution, Exposure time: 2 minutes

## Usage

For Research Use Only. Not for use in diagnostic or therapeutic procedures.