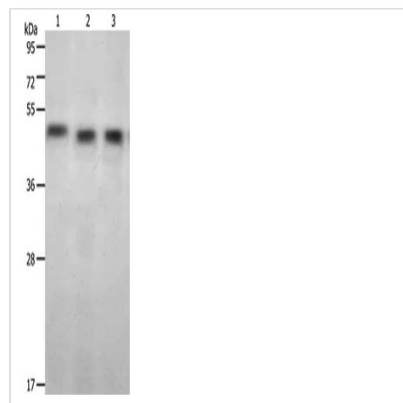




KISS1R Antibody

Product Code	CSB-PA563634
Storage	Upon receipt, store at -20°C or -80°C. Avoid repeated freeze.
Uniprot No.	Q969F8
Immunogen	Synthetic peptide of Human KISS1R
Raised In	Rabbit
Species Reactivity	Human
Tested Applications	ELISA, WB;ELISA:1:1000-1:2000, WB:1:200-1:1000
Form	Liquid
Conjugate	Non-conjugated
Storage Buffer	-20°C, pH7.4 PBS, 0.05% NaN ₃ , 40% Glycerol
Purification Method	Antigen affinity purification
Isotype	IgG
Alias	KISS1 receptor
Immunogen Species	Homo sapiens (Human)
Target Names	KISS1R

Image



Gel: 12%SDS-PAGE, Lysate: 40 µg, Lane 1-4: Jurkat cells, Hela cells, 231 cells, Primary antibody: CSB-PA563634(KISS1R Antibody) at dilution 1/350, Secondary antibody: Goat anti rabbit IgG at 1/8000 dilution, Exposure time: 10 minutes

Usage

For Research Use Only. Not for use in diagnostic or therapeutic procedures.