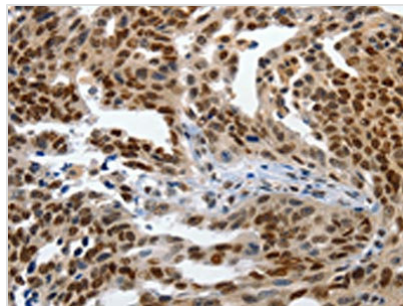




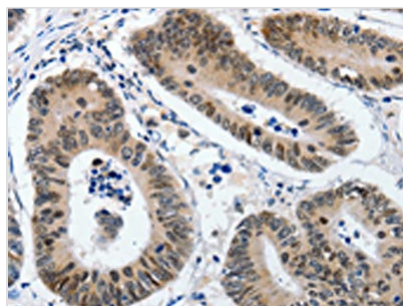
KLF5 Antibody

| | |
|----------------------------|--|
| Product Code | CSB-PA234904 |
| Storage | Upon receipt, store at -20°C or -80°C. Avoid repeated freeze. |
| Uniprot No. | Q13887 |
| Immunogen | Synthetic peptide of Human KLF5 |
| Raised In | Rabbit |
| Species Reactivity | Human,Mouse |
| Tested Applications | ELISA,WB,IHC;ELISA:1:1000-1:5000,WB:1:500-1:2000,IHC:1:100-1:300 |
| Form | Liquid |
| Conjugate | Non-conjugated |
| Storage Buffer | -20°C, pH7.4 PBS, 0.05% NaN ₃ , 40% Glycerol |
| Purification Method | Antigen affinity purification |
| Isotype | IgG |
| Immunogen Species | Homo sapiens (Human) |
| Target Names | KLF5 |

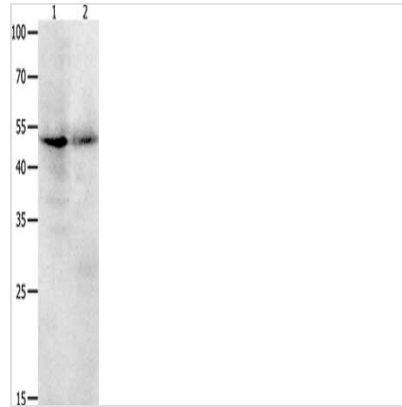
Image



The image on the left is immunohistochemistry of paraffin-embedded Human ovarian cancer tissue using CSB-PA234904(KLF5 Antibody) at dilution 1/120, on the right is treated with synthetic peptide. (Original magnification: x200)



The image on the left is immunohistochemistry of paraffin-embedded Human colon cancer tissue using CSB-PA234904(KLF5 Antibody) at dilution 1/120, on the right is treated with synthetic peptide. (Original magnification: x200)



Gel: 10+12+15%SDS-PAGE, Lysate: 40 μ g,
Lane 1-2: Jurkat cells, human ovarian cancer
tissue, Primary antibody: CSB-PA234904(KLF5
Antibody) at dilution 1/1700, Secondary
antibody: Goat anti rabbit IgG at 1/8000 dilution,
Exposure time: 20 seconds

Usage

For Research Use Only. Not for use in diagnostic or therapeutic procedures.